

ACE RESOURCES

*A Newsletter for the Association
of Conservation Engineers*

MARCH 2009

*Enhancing Our
Natural Resources*

**Up close focus
on wetlands
and wildlife**
page 12

Inside this issue:

Daylighting the Dunes	3
Duckweed	4-6
2009 Conference– Award Competition, Registration & More	7-22
Horicon Marsh	23-24
James Schalk Scholarship Application	25-26
Membership Challenge	27
President's Message	28

This is a great issue of the newsletter!

Congratulations to everyone who contributed to making this the largest newsletter we have had in a long time!

There are some great articles about projects some of our members are working on or are familiar with. And then there is all the information about this year's conference so very well put together.

I hope you all enjoy reading this newsletter cover to cover this time. All

Editor's Note

the conference information is setup as a pull out section so you can keep it handy.

I hope many of you will submit a project for this year's awards competition. I also hope you will

encourage submittals for the scholarship.

I know budgets are tight and many employers are not as willing to cover conference expenses, but this year's conference has so much planned — please consider coming.

Lynda Cliburn
Editor

P.S. They tell me Wyoming is a great place for a family vacation!

Association of Conservation Engineers

EXECUTIVE COMMITTEE

David Freedman, GAPresident
Randy Knott, GAPresident Elect
Jim Price, ARPast President
Eugene Comoss, PAPast President
Champak Patel, INTreasurer
Kathy Dillmon, WYSecretary
David Bumann, WYAt Large
John Kattell, MTAt Large

Past Presidents Committee

Tom Hohman, IN – Chair
Norval Olson, CO
Jim Price, AR
Dwight Hanson, NE

Operations Committee

Norval Olson, CO – Chair
Joe Barron, SC
Gene Comoss, PA
Les Haun, TN
Tom Hohman, IN

Bylaws Committee

Bob Roads, IL – Chair
Terry Boyd, AL
Joe Corbin, WI
Gerald Dorscheid, WI
George Kulick, GA
Deb Ohlinger, CO
Brian Vinci, WV

Scholarship Committee

Dwight Hanson, NE – Chair
Drew Bender, IN
Randy Knott, GA
John Leszczynski, IN
Deb Ohlinger, CO

History Committee

Terry Boyd, AL – Chair
Linc Cochran, IL
Ed Donahue, WA
Gerald Dorscheid, WI
Dom Mangardi, WI
Frank Temple, AL

Special Committee (Education/Scholarship)

Dwight Hanson, NE - Chair
Drew Bender, IN
Randy Knott, GA
Deb Ohlinger, CO
Sanjay Olson, WI

Membership Committee

Terry Boyd, AL – Chair
Kathy Dillmon, WY
Don Fontana, MO
Gary Kent-Bracken, WI
Joel Krause, MT
George Kulick, GA
John Leszczynski, IN
Roger Manninen, MN
Howard Thomas, MO
Brian Vinci, WV

Newsletter Committee

Gary Wilken, IL – Chair
Lynda Cliburn, IL – Editor
Matt Hobbs, IN – Group I
Ron O'Keefe, WI – Group II
Carter Damp, AL – Group III
Joe Baron, SC – Group IV
Tom Hohman, IN
Sue Peterson, IN
Brian Vinci, WV

Time and Place Committee

Bill Lueckenhoff, MO - Chair
Joel Krause, MT
Gene Comoss, PA
Tom Hohman, IN
Greg Mihalevich, MO
Jim Price, AR

Awards Committee

Randy Knott, GA – Chair
Alice Anderson, TX
Drew Bender, IN
Champak Patel, IN
Kim Gibson, IL
Norval Olson, CO
Sanjay Olson, WI
George Kulick, CA

Publications Committee

Joe Barron, SC – Chair
Gene Comoss, PA
Kathy Dillmon, WY
Sue Peterson, IN
Paul Schweiger, PA

Special Spouse (Program) Advisory Committee

Alice Anderson, TX – Chair
Jackie Mangardi, WI
Anita O'Keefe, WI
Jean Olson, CO
Ann Price, AR

Special Action Committee

Terry Boyd, AL – Chair
Dave Bumann, PA
Dwight Hanson, NE
Greg Mihalevich, MO

Program Committee

Dave Bumann WY- Chair
Eugene Comoss, PA
Joel Krause, MT
Jim Price, AR
Tom Hohman, IN



Storm damage moves daylighting project forward

Sometimes good things come from bad. Remnants of Hurricane Ike ravaged Indiana Dunes State Park in 2008, with record rains and storm water runoffs destroying a portion of the Lake Michigan beach parking lot. The damage was caused by the inability of the combination stream culvert and storm sewer to handle the flow.

This is the same culvert which was partially removed several years ago in the award winning Dunes Creek Daylighting project (2006 Carl Anderson Conservation Project, Award of Excellence). The section of Dunes Creek which had been daylighted survived the assaults of the storm undamaged. It was the man made, concrete and asphalt construction that could not handle the record rains.

There has been a strong desire to daylight the remaining section of Dunes Creek ever since the completion

of the earlier project. The barriers to doing so involve both financial and customer service concerns.

Like most states, funds for projects are short. In addition, daylighting the remaining section of creek would require removing a section of the parking lot, and losing additional parking spaces. That would mean not enough parking spaces to serve visitors on busy summer weekends. Due to the environmental sensitivity of currently undeveloped areas, adding an additional parking lot elsewhere is not an option.

After a thorough evaluation of available options, Indiana is moving ahead with daylighting the remaining section of Dunes Creek. Ways were found to use existing parking lots more efficiently to make up for the spaces that will be lost. The project is currently under design with bidding anticipated for late summer. For more

information on the decisions that allowed the project to proceed, plan on attending the ACE annual conference in Cody, WY this August.

Construction will begin after Labor Day weekend, typically the end of the main recreation season for the beach. The plan is to have work completed by the 2010 Memorial Day weekend. This will make for some challenges, as winter weather on Lake Michigan can be brutal.

The result will be the return of all of Dunes Creek to a natural state, although not totally in the original location. The result will probably also be another entry in the Carl Anderson Conservation Project Awards competition.

Tom Hohman
Division of Engineering
Indiana Department of Natural
Resources



6/26/2006



6/18/2007

Got Duckweed? Get Carp!

The Forest Service provides wastewater

treatment using lagoons at more than 100 ranger stations, work centers, and recreation sites. At many of these sites, one or more lagoon cells (figure 1) are infested with duckweed, which must be thinned frequently using a rake or skimmer to keep the lagoon functioning effectively.

Duckweed is the common name of a large family of small, floating water plants (Lemnaceae) that love nutrient-rich environments such as wastewater treatment lagoons.

While duckweed is efficient at removing nutrients from wastewater, it must be raked regularly to remove dead plants that would add to the nutrient load. Employees maintaining a Forest Service wastewater treatment lagoon struggled with duckweed removal for nearly 30 years before solving their problem last year. Here's the secret of their success.

Ralph Gormley, the maintenance technician for the Red River District of the Nez Perce National Forest in the Northern Region, attended a wastewater training course taught by Ray Hyde (more information available at <http://www.idahooperatortraining.com/>). At the time, Hyde was the public works director for the city of Hailey, ID. Hyde explained that triploid grass carp can control duckweed and other aquatic plants by eating them. Triploid

or more years and grow to 30 pounds or more if they get enough to eat. Triploid grass carp that are 8 to 10 inches long cost about \$20 each if only a few are purchased, but are less expensive if ordered in large quantities. The carp are voracious, and may eat the plants faster than the plants can regrow.

Gormley was able to prove that the lagoon configuration at the Red River Ranger Station would prevent the fish from getting into the Red River nearby. The lagoons are fenced to keep animals and people out. Water is discharged through a batch sand filter (a set amount of water goes in every so often and the rest of the time it's dry) with a bottom drain under 3 feet of sand. The filtered water is dosed with chlorine and discharged through a 200 foot-long ditch that is normally dry. Except in unusual conditions, the discharge water is absorbed through the soil under the ditch rather than entering Red River directly.

Gormley obtained a private pond permit for triploid grass carp from the Idaho Department of Fish and Game and ordered seven carp, as recommended by Opaline Aqua Farms based on the lagoon's size. He was sent nine carp. All the carp arrived healthy

and were released into the lagoon. After about a year, the carp had eliminated almost all the duckweed on the lagoon (figure 2). Ralph suspects that the fish have probably tripled in size, but may soon die because they've eaten all of their food. More carp will need to be purchased if the duckweed

“...paying \$140 for fish every few years is much cheaper than the cost of wages for raking duckweed off the lagoon every week.”

returns. Still, paying \$140 for fish every few years is much cheaper than the cost of wages for raking duckweed off the lagoon every week. The presence of the triploid grass carp did not change the effectiveness of the wastewater treatment process.

Using Grass Carp Requires Caution Grass carp (figure 3), also known as white amur (*Ctenopharyngodon idella*), are plant-eating fish native to the Amur River basin in Russia

and China. They can live in water temperatures from 34 to 95 degrees Fahrenheit.

Duckweed isn't their favorite food, but grass carp will eat it and thrive. They prefer grazing on a variety of pond weeds, musk grasses, and elodea, and may even eat water lilies and cattails if that's what's available. Because they eat so much of so many types of plants, releasing fertile grass carp into natural waters could be a disaster. That's why most States only allow carp that are triploid to be used for vegetation control and, even then, only under certain conditions.

(Continued on page 6)

(Photos on page 4) In June 2006 (top) the second cell of the wastewater lagoon at Red River Ranger Station was choked with duckweed. The second cell is the one with the bright yellowish green color surface. Grass carp were released into the lagoon later that month.

By June 2007 (bottom) the grass carp had almost completely eliminated the duckweed in the Red River wastewater lagoon.

Duckweed



This photo of a young grass carp looks similar to a pale goldfish. The photo is from the University of Michigan's Fish Specimen Image Collection.

“...Only purchase grass carp that are certified by the USFWS to be triploid and disease free. ..introduced grass carp already have altered aquatic habitats in several areas, harming native species.”

(Continued from page 5)

Triploid carp have a third set of chromosomes, which prevents them from reproducing. Triploid fish are created by subjecting fertilized fish eggs to a temperature or pressure shock. After the fish have hatched, a blood test can determine whether they are normal (diploid) or triploid. You can learn more about testing triploid grass carp by going to this website: <http://www.fws.gov/warmsprings/FishHealth/frgrscrp.html>.

Only purchase grass carp that are certified by the U.S. Fish and Wildlife Service to be triploid and disease free.

Other carp may carry disease or be capable of reproducing. Certification is important because accidental releases can occur due to unsuccessful predation, floods, or other causes. For instance, an osprey could catch a fish from a lagoon and drop it into a stream nearby. Introduced grass carp already have altered aquatic habitats in several areas, harming native species. Grass carp shorter than 4 inches eat bugs as well as plants and aren't very efficient at removing duckweed and other aquatic plants. Predators also tend to kill more of the small fish. The best size carp for removing plants in a pond or lagoon is from 8 to 11 inches long.

In most States, permits are required to possess or stock nonnative fish such as triploid grass carp. In some states, a fish transport permit and environmental documentation may be required. Both normal (diploid) and triploid grass carp are prohibited in New Jersey and New Hampshire.

Aquatic farms produce triploid grass carp in most regions of the United States, although they are most common in the Southeast. Some states that allow triploid grass carp to be used don't allow aquatic farms to breed nonnative fish such as grass carp. Suppliers of carp in your area can be found by searching the Web. Gormley obtained carp for the Red River lagoon from: Opaline Aqua Farms, Otto and Sharon Cunningham, 9347 Fish Pond Lane Melba, ID 83641; Phone (208) 495-2654. Gormley's contact was Rich Cunningham.

More information about using triploid grass carp to control aquatic plants is available from:

Washington State Department of Ecology:

http://www.ecy.wa.gov/programs/wq/plant_s/management/aqua024.html)

University of Florida:

<http://edis.ifas.ufl.edu/FA043>)

West Virginia University:

<http://www.wvu.edu/~agexten/aquaculture/triploid.htm>)

About the Author *Kathleen Snodgrass is a project leader at the Forest Service's Missoula Technology & Development Center (MTDC). She received a bachelor of science degree in architectural studies from Washington State University in 1974 and then spent 10 years in highway design and construction with the Idaho Division of Highways. She began her career with the Forest Service in 1984. Kathleen worked in facilities, landscape architecture, land line, and general engineering on the Nez Perce National Forest for 10 years, and was the forest's facilities architect for 7 years before coming to MTDC.*

Association of Conservation Engineers 2009 Conference



Inside this Special Section

Preliminary Agenda.....	Pages 8-9
Guest / Spouse Program	Pages 10-11
Attendee / Guest Registration Form.....	Page 12
Sponsorship / Exhibitor Registration.....	Page 13-14
2009 Competition Announcement and Rules ..	pages 15-20
48th Annual Call for Papers	Page 21

Association of Conservation Engineers 2009 Conference

Cody, Wyoming
August 16-20, 2009

Preliminary Agenda

This is a preliminary agenda and, therefore, is subject to change. Any changes will be posted online to the conference website at www.2009aceconference.org. Questions regarding the conference can be sent to info@2009aceconference.org. Unless otherwise noted, all meeting rooms are located at the Blari Holiday Inn Cody, Wyoming.

Sunday, August 16, 2009

- 8:00 am Trout Fishing North Fork of the Shoshone (until 3:00)
- 3:30 - 6:00 pm REGISTRATION
- 4:30 - 6:00 pm EXECUTIVE COMMITTEE MEETING
- 6:00 - 8:00 pm WELCOME RECEPTION

Monday, August 17, 2009

- 7:00 am REGISTRATION
- 8:00 am WELCOME, *Main Ballroom*
Steve Ferrell, Director Wyoming Game & Fish Department
- 8:30 am "Welcome to Cody", Guest Speaker Here
- 9:00 am INTRODUCTIONS
- 9:30 am GROUP PHOTO
- 10:00 am BREAK
- 10:30 am TECHNICAL SESSION, *Main Ballroom*
Presentation Here
Presentation Here
- 11:30 am ANDERSON AWARD WINNERS
- 12:00 pm LUNCH (provided) with spouses/quests, *Taggart's Ballroom*
- 1:30 pm INITIAL BUSINESS MEETING, *Main Ballroom*
- 2:00 pm TECHNICAL SESSION, *Main Ballroom*
Presentation Here
Presentation Here
- 3:00 pm BREAK
- 3:30 pm TECHNICAL SESSION, *Main Ballroom*
Presentation Here
Presentation Here
- 4:30 pm GROUP ACTIVITY - Guests and attendees depart for Buffalo Bill Historical Center. Dinner will be provided. We anticipate returning by 8:30 pm.

Tuesday, August 18, 2009

- 7:00 am REGISTRATION
- 8:00 am TECHNICAL SESSION, *Main Ballroom*
Presentation Here
Presentation Here
Presentation Here
Presentation Here
- 10:00 am BREAK
- 10:30 am TECHNICAL SESSION, *Main Ballroom*
Presentation Here
Presentation Here
Presentation Here
- 12:00 pm LUNCH (provided) *Taggart's Ballroom*
- 1:30 pm TOUR & GROUP ACTIVITY - Depart for Sunlight Basin Wildlife Management Area. A barbeque dinner will be provided. We anticipate returning to the hotel by 8:30 pm.





Preliminary Agenda

This is a preliminary agenda and, therefore, is subject to change. Any changes will be posted online to the conference website at www.2009aceconference.org. Questions regarding the conference can be sent to info@2009aceconference.org. Unless otherwise noted, all meeting rooms are located at the Blari Holiday Inn Cody, Wyoming.

Wednesday, August 19, 2009

- 7:00 am REGISTRATION
- 8:00 am TECHNICAL SESSION, *Main Ballroom*
Presentation Here
Presentation Here
Presentation Here
Presentation Here
- 10:00 am BREAK
- 10:30 am TECHNICAL SESSION, *Main Ballroom*
Presentation Here
Presentation Here
Presentation Here
- 12:00 pm LUNCH, *On your Own*
- 1:30 pm TECHNICAL SESSION, *Main Ballroom*
Presentation Here
Presentation Here
- 2:15 pm BREAK
- 2:30 pm BUSINESS MEETING
- 4:30 pm EXECUTIVE COMMITTEE MEETING,
Main Ballroom
- 6:00 pm SOCIAL HOUR
- 7:00 pm BANQUET

Thursday August 20, 2009

- 8:30 am FIELD TRIP (attendees and quests) -
Everyone board bus for trip to.....TO BE
ANNOUNCED.....





Association of Conservation Engineers 2009 Conference

Cody, Wyoming
August 16-20, 2009

Guest/Spouse Program

This is a preliminary agenda and, therefore, is subject to change. Any changes will be posted online to the conference website at www.2009aceconference.org. Questions regarding the conference can be sent to info@2009aceconference.org. Unless otherwise noted, all meeting rooms are located at the Blari Holiday Inn Cody, Wyoming.

Sunday, August 16, 2009

- 8:00 am Trout Fishing North Fork of the Shoshone (until 3:00)
- 3:30 - 6:00 pm REGISTRATION
- 4:30 - 6:00 pm EXECUTIVE COMMITTEE MEETING
- 6:00 - 8:00 pm WELCOME RECEPTION

Monday, August 17, 2009

- 7:00 am REGISTRATION
- 8:00 am WELCOME, *Main Ballroom*
Steve Ferrell, Director Wyoming Game & Fish Department
- 8:30 am "Welcome to Cody", Guest Speaker Here
- 9:00 am INTRODUCTIONS
- 9:30 am GROUP PHOTO
- 10:00 am BREAK (free time until lunch)
- 12:00 pm LUNCH (provided) with spouses/quests, *Taggart's Ballroom*
- 1:30 pm TOUR - CODY TROLLEY TOUR
- 3:30 pm Return to Hotel
- 4:30 pm GROUP ACTIVITY - Guests and attendees depart for Buffalo Bill Historical Center. Dinner will be provided. We anticipate returning by 8:30 pm.



© Mark Gocke

Tuesday, August 18, 2009

- 7:00 am REGISTRATION
- 8:30 am SHOPPING DOWNTOWN CODY
- 12:00 pm LUNCH - On Your Own
- 1:30 pm TOUR & GROUP ACTIVITY - Depart for Sunlight Basin Wildlife Management Area. A barbeque dinner will be provided. We anticipate returning to the hotel by 8:30 pm.

BUFFALO BILL
Most famous man on earth in 19th
West. Legend of the American West.
Take a trolley tour and see why
Cody, Wyoming is called the
"Wild West Capital".
Hear what people are saying
about Cody today.

"What a great, great tour! They
bring Buffalo Bill to life in the
town. No visit to Cody is complete
without going on this trolley
tour!"
— Al Carson Cook,
Buffalo Bill's Great Grandson

"Your tour was the highlight of our entire trip!"
— Visitor from Virginia

Keep up with Cody from Home!
News, Events, Weather and more!
EverythingCody.com
Your daily one-stop source for everything
related to Cody, Wyoming!

**CODY TROLLEY
TOURS**

Two Bear Enterprises, Inc. O&A Cody Trolley Tours
P.O. Box 2234 • Cody, Wyoming 82414
307.527.7943 • CodyTrolleyTours.com

**BEST OF Cody
Wild West
TOUR**

For an amazing and fun 1-hour tour!
TWO WESTERN GUIDES
**GIVE US AN HOUR,
WE'LL GIVE YOU 100 YEARS!**

"This is the best trolley tour
we've ever taken, and we've
taken them all over the world!"
— Randall Travel Marketing, Inc.

CODY, WYOMING
Founded by Buffalo Bill Cody in 1891





Guest/Spouse Program

This is a preliminary agenda and, therefore, is subject to change. Any changes will be posted online to the conference website at www.2009aceconference.org. Questions regarding the conference can be sent to info@2009aceconference.org. Unless otherwise noted, all meeting rooms are located at the Blari Holiday Inn Cody, Wyoming.

Wednesday, August 19, 2009

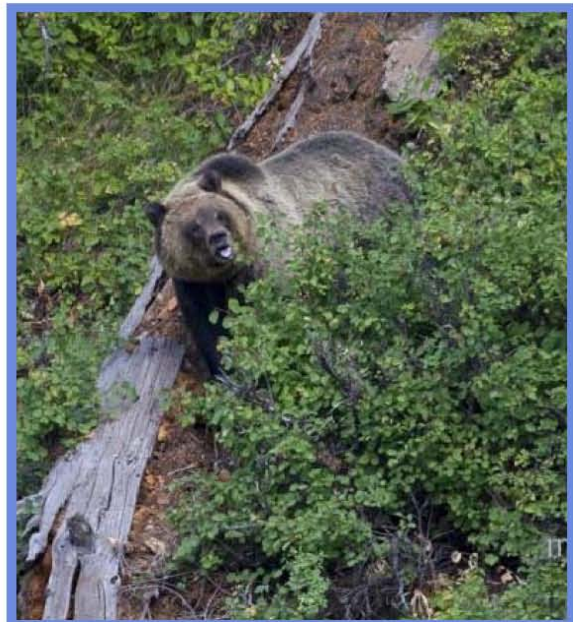
- 7:00 am REGISTRATION
- 8:30 am TOUR - TO BE ANNOUNCED
- 12:00 pm LUNCH, *On your Own*
- 1:30 pm TOUR - TO BE ANNOUNCED
- 4:30 pm Return to Hotel
- 6:00 pm SOCIAL HOUR
- 7:00 pm BANQUET

Thursday August 20, 2009

- 8:30 am FIELD TRIP (attendees and quests) - Everyone board bus for trip to.....TO BE ANNOUNCED.....

The Call of the Wild
YELLOWSTONE NATIONAL PARK

As you enter Yellowstone, the world's first National Park established in 1872, you will be amazed! It's 22 million acres include spectacular alpine lakes and rivers, as well as geysers, mud cauldrons, and bubbling paint pots. The Park is also home to a rich variety of wildlife including black bears, grizzlies, elk, buffalo, antelope, big horn sheep, moose, deer, and the reintroduced wolves.





Association of Conservation Engineers 2009 Conference

Cody, Wyoming
August 16-20, 2009

Attendee and Guest Registration

Please use this form to register for the 48th Annual ACE Conference to be held August 16-20, 2009 in Cody, Wyoming. If you have questions or need to make special payment arrangements, please call (406) 273-7224 or 1-866-MEET-110 (toll free). Lodging, activity and program information can also be found online at www.2009aceconference.org. Use one form for each attendee. **Conference registration includes a free 1-year ACE membership.** Mail completed forms to: ACE Conference, Meetings Northwest, LLC, PO Box 2083, Missoula, MT 59806-2083. Or, fax this form with payment information to (406) 273-2494 (credit card payment only).

Please provide all of the following:

ATTENDEE NAME _____

TITLE _____

COMPANY/ORGANIZATION _____

ADDRESS _____

ADDRESS (continued) _____

CITY _____ STATE/PROVINCE _____ ZIP/POSTAL CODE _____

PHONE _____

FAX _____

EMAIL _____

ACE MEMBER? Yes No

Allow us to better serve you. If you or a guest have any special needs (diet, transportation requirements, etc.) please indicate so here:

CANCELLATION POLICY

Individuals who must cancel their registration can do so 30 days prior to the event and receive a full refund. Individuals who must cancel two weeks to 30 days prior to the event receive a 75% refund, and a 50% refund will be issued for cancellations made one to two weeks prior to the event. Cancellations received less than 1 week from event will not be eligible for a refund. Substitutions, however, are always welcome.

OFFICE USE ONLY

Date Received _____ Payment method: CK CC OT _____
Attendee ID Number _____ Packet: YES NO _____
Date sent _____

Fees

Attendee Registration: To be eligible for the early registration fee, this form must be postmarked by June 15, 2009. Select from the following:

	Early	Late
Full Conference Registration	\$300 ⁰⁰ <input type="checkbox"/>	\$350 ⁰⁰ <input type="checkbox"/>
One-Day Registration: Date _____	\$100 ⁰⁰ <input type="checkbox"/>	\$120 ⁰⁰ <input type="checkbox"/>
Student Registration (full conference)	\$100 ⁰⁰ <input type="checkbox"/>	\$100 ⁰⁰ <input type="checkbox"/>

Subtotal Attendee Registration: _____

Guest Registration: The \$150.00 fee shown below is for the full guest program and covers all activities. Individuals not wanting to attend all events can register separately under Event Tickers. Please complete the following:

GUEST #1 NAME _____	\$150 ⁰⁰ <input type="checkbox"/>
GUEST #2 NAME _____	\$150 ⁰⁰ <input type="checkbox"/>

Event Tickets (for those not registering for the full guest program)

Monday Buffalo Bill Center - quantity _____	\$25 ⁰⁰ early <input type="checkbox"/>	\$35 ⁰⁰ late <input type="checkbox"/>
Tuesday To Be Announced - quantity _____	\$50 ⁰⁰ early <input type="checkbox"/>	\$80 ⁰⁰ late <input type="checkbox"/>
Wednesday To Be Announced - quantity _____	\$35 ⁰⁰ early <input type="checkbox"/>	\$45 ⁰⁰ late <input type="checkbox"/>
Wednesday Banquet - quantity _____	\$30 ⁰⁰ early <input type="checkbox"/>	\$40 ⁰⁰ late <input type="checkbox"/>
Thursday Trip/Lunch - quantity _____	\$40 ⁰⁰ early <input type="checkbox"/>	\$50 ⁰⁰ late <input type="checkbox"/>

Subtotal Guest Registration: _____

Fees

Attendee Registration: \$ _____

Guest Registration: \$ _____

TOTAL: \$ _____

- Check or Money-Order (Payable to Meetings Northwest, LLC)
 Credit Card (provide all of the requested information)

Circle one - Visa Mastercard American Express

Name (as it appears on the card) _____

Number _____

Expiration Date _____

Card Verification/Validation Code (Visa/MC - three digit number on the back of card - usually found in signature area)



Association of Conservation Engineers 2009 Conference

Cody, Wyoming
August 16-20, 2009

Sponsorship and Exhibitor Registration

About ACE

The Association of Conservation Engineers (ACE) is a professional organization of engineers and others in related disciplines that work with the natural environment and promote the application of sound engineering practices in the field of natural resource protection, environmental restoration and recreation development.

The organization's objective is to bring together the knowledge and experience of engineers and other personnel employed by conservation and recreation agencies and consultants who have a community of specialized interests in the areas of fish, wildlife, parks, forests and related conservation and recreation fields.

About the Conference

The 48th Annual ACE Conference will be held in exciting Cody, Wyoming, August 16-20, 2009. Attendance in 2008 included over 100 participants from a variety of state, federal and consulting natural resource and engineering disciplines. Sponsorship and exhibit opportunities are outlined below. We hope you consider joining us for this unique and informative event. Additional information can be found online at www.2009aceconference.org.

Sponsorship Opportunities

Want to add visibility and value to your conference participation? Consider a conference sponsorship! Sponsorships are only \$350.00 and include one conference attendee registration and a free 1-year ACE membership. Sponsors will also have their names listed in conference publications and on the Conference website. If you wish to be a sponsor, simply check the sponsorship section on the following page.

Exhibit Opportunities

Companies and agencies are also invited to display information regarding their services or products as a conference exhibitor. The registration fee is \$425.00 for early registration (prior to June 12th) and \$500 for late registration. Each exhibit space is 10'x5', and includes 1 table (if needed), 2 chairs and power. Exhibitors will also receive one conference attendee registration and a free 1-year ACE membership. Names of exhibitors will be listed in conference publications and on the Conference website.

Exhibitors are also invited to send materials for inclusion in Conference packets. Materials should be sent to the attention of the ACE Conference at the following address: Meetings Northwest, LLC, PO Box 2083, Missoula, MT 59806-2083. All materials must be received by Friday, June 19th.

Setup Times. Exhibitors can setup between 5:00 pm and 7:00 pm, Sunday, August 16th or 7:00 am and 9:00 am, Monday, August 17th. All exhibitors must be setup by 9:00 am, Monday, August 17th and should remain setup until 3:00 pm, Wednesday, August 18th. If you wish to participate as a exhibitor, please complete the exhibitor section on the following page.





Association of Conservation Engineers 2009 Conference

Cody, Wyoming
August 16-20, 2009

Sponsorship and Exhibitor Registration

All registration forms, as well as questions regarding exhibitor space and registration monies, should be directed to Meetings Northwest, LLC. They can be reached toll free at 1-866-633-8110 or via email at info@2009aceconference.org. Exhibitor Fees include a complimentary participant registration, 5x10 display area, 2x6 table (if needed), two chairs, and power. Sponsorship and Exhibit fees also include a free 1-year ACE membership.

Registration

Please provide the name of the primary contact:

NAME _____

TITLE _____

COMPANY (this name will be used on Conference publications and website) _____

ADDRESS _____

CITY _____ STATE/PROVINCE _____ ZIP/POSTAL CODE _____

PHONE _____

FAX _____

EMAIL _____

Please provide the name of the individual to receive the complimentary registration (session attendee):

NAME _____

TITLE _____

ADDRESS _____

CITY _____ STATE/PROVINCE _____ ZIP/POSTAL CODE _____

PHONE _____

FAX _____

EMAIL _____

Please provide the name of the individual(s) who will be attending as exhibitors (non-session attendee):

Fees

Exhibitor Registration Fee: \$ _____

\$425 Early (before June 12th)

\$500 Late (after June 15th)

Equipment Needs: (check all that apply)

2x6 Skirted Table

Other (please specify special needs) _____

Sponsorship Registration Fee: \$ _____

\$350 (must be received by June 26th)

Payment

Payment: Exhibitor Fee: \$ _____

Sponsorship Fee: \$ _____

TOTAL: \$ _____

Select One:

Check or Money-Order (Payable to Meetings Northwest, LLC)

Credit Card (provide all of the requested information)

Circle one - Visa Mastercard American Express

Name (as is appears on the card) _____

Number _____

Expiration Date _____ Card Verification/Validation Code (Visa/MC - three digit number on the back of card - usually found in signature area)

Please complete and mail to:
ATTN: ACE Conference
Meetings Northwest, LLC
P.O. Box 2083
Missoula, MT 59806-2083

Or,
You can fax this form with
payment information to
(406) 273-2494 (credit card
payment only).

Association of Conservation Engineers

2009 Competition Announcement and Rules

16th Annual Carl Anderson
Conservation Project Engineering Awards

Purpose

The purpose of this design awards competition is to give recognition to those members and/or their departments whose work, as judged by their peers and associates, best exhibits the goals and objectives of The Association of Conservation Engineers. These goals and objectives are presented on the Association of Conservation Engineers Web site at www.conservationengineers.org.

Categories

PROJECT CATEGORY A

STUDIES / RESEARCH PROGRAMS

Non-design services including, but not limited to:

Pilot/experimental projects
Bioengineering
Electrical heating
New products and materials
Basic research on new technology
Fuels and water
Properties and uses of fuels
Research in natural resources
Hazardous waste studies
Resource recovery
Environmental impact studies
Soils and other subsurface geotechnical investigation and evaluation
Damage correction
Computer services
Technical papers.

All of the entries in Category A are involved with non-construction document design services.

PROJECT CATEGORY B

CONSERVATION / ENVIRONMENTAL

Energy generation, transmission, distribution, conversion, conservation and storage-mitigation
Dams (water supply, irrigation, flood control, recreational, fisheries management)
Drainage systems
Incineration
Mine Reclamation
Parks and Wildlife facilities
Resource recovery
Waste treatment facilities
Water resources and supply
Wetlands treatment

PROJECT CATEGORY C

SPECIAL PROJECTS

Any project that does not fit into other categories including, but not limited to:

Erosion protection and control
Fish hatcheries
Recreational parks, zoos, marinas, aquariums
Shooting ranges
Site development
Structures including bridges
Historical restoration/presentation
Visitor Centers/museums
Construction projects resulting from unique studies or research of the type in Category A.

Eligibility

ENTRANT:

Any governmental agency or department, or its selected consultant, engaged in the fields of recreation, wildlife preservation, tourism, and/or conservation of the natural and historical environment, who is a member of or has made application for membership in the ACE, is eligible for participation in this awards program.

PROJECT:

The project entered must be the completed work of the agency or owner making the submission.

Up to two project entries may be submitted by each participant.

The project must have been completed and in its intended use within the **36 months** preceding its submittal.



Association of Conservation Engineers

2009 Competition Announcement and Rules 16th Annual Carl Anderson Conservation Project Engineering Awards

For use of award chairperson only

PROJECT REG. NO. _____

DECLARATION OF INTENT TO SUBMIT FOR ACE CONSERVATION PROJECT ENGINEERING AWARDS

(This page is due by fax or mail postmarked on or before April 6, 2009)

Date submitted: _____

Note: Please furnish all information requested below for each entry. If additional forms are required, copy this format.

I intend to submit an entry to the Association of Conservation Engineers Design Awards Program in the following category and division designated.

Category (Check One)

A. Studies/Research Program _____

B. Conservation/Environmental _____

C. Special Projects _____

Budget Cost of Project: _____ Scheduled Completion: _____

Actual Cost of Project: _____ Actual Completion: _____

Name of Submitting Entity: _____

Address: _____

Contact Name: _____ Phone No: () _____

Fax No: () _____

E-mail: _____

Name of Project: _____

Location: _____

Owner's Name: _____

Note: Remember to get Owner's approval for use of project award nomination

Name of Consultant(s): _____

(if applicable) May be the same as submitting entity

Address: _____

Note: The submitting entity or the owner of the project must be a member of the ACE organization or must have made application for membership at the time the Declaration of Intent is filed.



Association of Conservation Engineers

2009 Competition Announcement and Rules

16th Annual Carl Anderson
Conservation Project Engineering Awards

Entry

Making your submittal for the ACE Conservation Project Engineering Award is a simple two-step process as follows:

FIRST: Send your Declaration of Intent to submit by fax, email or mail postmarked no later than Monday, **April 6, 2009**.

SECOND: Prepare your Entry packet. Entries must be postmarked no later than Monday, **May 4, 2009**.

Winners will be notified on or before July 10, 2009, to prepare a Project Panel to bring for display and presentation at the ACE 48th Annual Conference in Cody, Wyoming on August 16-20, 2009.

Submit to:

ACE Committee Chairman

Randy Knott

Mactec Engineering and Consulting, Inc.
3200 Town Point Dr., NW
Kennesaw, Georgia 30144

FAX: 770-421-3486

Phone: 770-421-3400

Email: raknott@mactec.com

Note: The entry fee for the 2009 awards competition has been waived. No entry fee will be required.

Each entry shall be submitted individually in one standard 1/2 inch to 1 inch 3-ring binder, on 8 ½ x 11, or 11 x 17 folded sheets, and shall include the following information in the order stated. Five **(5) original copies for each entry must be provided.**

1. A copy of the ACE Declaration of Intent form as previously submitted.
2. Letter from the agency or owner giving written permission allowing for publication of any feature or innovation found to be of interest to the members of the Association.
3. ACE Data Sheet 1 (attached).
4. ACE Data Sheet 2 (attached).
5. Drawings or prints on paper no larger than 11 x 17; up to a maximum of 4 sheets as needed to delineate project.
6. Colored photographs any size up to 8 x 10 mounted *or color printer pages to 8½ x 11* (to a maximum of six) may be utilized to complement the written description. (Note: no slides can be accepted)

Note: Entries shall be postmarked **on or before May 4, 2009**, and mailed to the Awards Committee Chairman at the address above.

Project Panel

A project panel will be required of those winning entries receiving an Award of Excellence or an Award of Merit, and is requested, but optional, from the winner of the Award of Honor. The project panels will be on display during the annual conference for viewing by all those in attendance. Project panels will be returned after the conference.

Project panels will be restricted to one 30" x 40" heavy weight crescent or mat board, or two 20" x 30" boards hinged and capable of standing on an easel. Material displayed shall be either B/W or colored photos, printed texts or drawings which best describe the features of the entry. Project panels shall be identified with the name of the submitting department or agency, the name of the project and its location.



For use of award chairperson only

PROJECT REG. NO. _____

Received _____

ACE 2009 DESIGN AWARDS DATA SHEET #1

PROJECT NAME: _____

1. Agency / Firm Making Submittal: _____

2. Address: _____

3. Contact Name: _____ Contact Phone No: _____

Fax No: _____

E-mail: _____

4. Project Location: _____

5. Project Category: _____

6. Outside Consultant(s): _____

7. If a winning entry, please give exact name(s) or title(s) as they should appear on the plaque or certificate:

Note: The information from the submitting entry must be confined to this sheet only.

To maintain anonymity during the judging, this data sheet, and the declaration of intent copy will be removed from the submitted material. All other submitted material will be signed or marked with the project registration number copy.



Association of Conservation Engineers

2009 Competition Announcement and Rules 16th Annual Carl Anderson Conservation Project Engineering Awards

Judging

The judging panel shall consist of not less than three nor more than five judges. All judges will be qualified design professionals such as engineers, architects, biologists, botanists or others involved in the conservation / preservation or environmental field. At least two of the judges will be a member of ACE. The judges will be selected by the Awards Committee and may reside in the state hosting the conference. The judges will meet soon after the submission deadline to evaluate and

select the projects to receive awards. The judges' decision shall be final.

None of the judges may submit entries nor be identified with any submitted entry.

All entries will be judged on their own merit, and within their selected category, based on their meeting or exceeding all of the requirements of the rating guidelines.

Definitions of Ratings Guidelines

1. Originality / Innovation / New Application of Existing Techniques:

- Does the entry represent any new branch of conservation engineering or some type of breakthrough in general knowledge of our environment?
- Does the entry represent a unique mix of different techniques, materials or equipment?

2. Technical value to the Conservation Engineering Profession:

- Does the entry advance the state of the conservation engineers' art?

3. Complexity:

- Does the entry involve very complex criteria or types of problems to be addressed?
- Were extraordinary problems of site, location, hazardous conditions, project requirements, or similar elements present?
- Does the entry require out-of-the-ordinary technology and ingenuity for achievement?

4. Meeting and Exceeding Owner's Needs:

- Is it an economical and cost-effective solution?
- How did final cost relate to original budget estimate?
- How closely does the entrant's solution meet the total goals of the owner?
- Does the entry meet and justify its original concept?
- Did the entrant meet the owner's time schedule?

5. Natural Resources and Environmental Considerations:

- Does the entrant's solution bring into play an improved program, i.e., are additional benefits realized as a spin-off?
- Does the entrant's role provide society with any useful advancement in the area of conservation and environmental sciences?
- Is the public health, safety, or welfare enhanced as a result of the entrant's role in the project?

Awards

The jury shall make awards to three meritorious entries. At the discretion of the jury, the number of awards may be limited or expanded. The following awards will be issued:

A certificate of participation may be presented to all other qualified entries. From time to time a letter of recognition or certificate may be awarded to other entries as the judges may recommend.

- Award of Excellence.....Special Award
- Award of Merit..... Plaque
- Award of HonorPlaque

Awards will be presented during the 48th Annual ACE Conference in Cody, Wyoming, August 16-20, 2009.



For use of award chairperson only

PROJECT REG. NO. _____

Received _____

ACE 2009 DESIGN AWARDS DATA SHEET #2

PROJECT NAME: _____

In approximately 500 words (total), write a short summary of the project features and solutions that best answer the following rating guidelines:

- 1. Originality/Innovation/New Application of Existing Techniques: 15%
 - 2. Technical Value to Conservation Engineer's Profession: 20%
 - 3. Complexity of Program: 15%
 - 4. Meeting and Exceeding Owner's Needs: 25%
 - 5. Natural Resources & Environmental Considerations: 25%
- 100%

Note: The unnecessary use of names of agencies, departments, consultants, or individuals should be avoided.



Association of Conservation Engineers

48th Annual Conference

CALL FOR PAPERS

The Association of Conservation Engineers (ACE) invites all persons interested in the engineering practices of fish, wildlife and recreation development to submit abstracts of papers to be considered for presentation at the ACE 48th Annual Conference. The Conference will be held August 16-20, 2009 in Cody, Wyoming. Engineers, architects, designers, technicians, consultants, industry representatives and others in the field of conservation engineering are invited to submit abstracts. Conference presentations are scheduled for 30 minutes each, with longer presentations available.

Guidelines for Submitting Abstracts

- ▶ Abstracts are not required, but if submitted shall be a maximum of one-page, single-spaced and be submitted prior to the established deadline.
- ▶ Biological sketches of all authors shall be submitted and shall be a maximum of one page.
- ▶ All abstracts must be postmarked by **April 1, 2009**.
- ▶ Full papers will be required for publication of the conference proceedings; PowerPoint presentations are acceptable.
- ▶ Papers shall be on CD in Word format with hard copy. Papers are due at the conference.

Announcement of selected papers will be made on **June 1, 2009**.
Further instructions for speaker preparation will be provided upon notification of a paper's acceptance.

ENTRY FORM FOR ABSTRACTS

Paper Title: _____
Author: _____
Name: Title: _____
Company/Agency: _____
Address: _____
City, State, Zip: _____
Phone, Fax, Email: _____
List any Conferences where this paper has been presented: _____
List any equipment needs (laptop, projector, etc.): _____
Preference (if any) for date of presentation: _____

Fax, Mail or Email Form to:

David Bumann, PE
Wyoming Game & Fish Department
5400 Bishop Blvd.
Cheyenne, Wyoming 82006

Phone: (307) 777-4582; Fax: (307) 777-4602; e-mail: David.Bumann@wgf.state.wy.us

Association of Conservation Engineers 2009 Conference

Cody, Wyoming
August 16-20, 2009

A few last minute notes:

Please register for the Conference as soon as possible or at least submit an "Intend to Attend".

It is also very important that when reserving rooms, use the appropriate codes on the web site. This insures the group rates, and gives ACE credit for the hospitality room, and credit on Conference room set-up fees.

The Blair Hotels' Comfort Inn and Holiday Inn are located at the Buffalo Bill Village Resort. ACE has reserved 60 rooms at the Holiday Inn and 40 at the Comfort Inn. They also have a Cabin Village.

Please note that guests at the Comfort Inn receive a free Continental Breakfast. The Holiday Inn doesn't offer that.

General Conference Questions

Dave Bumann, PE
Wyoming Game & Fish Department
5400 Bishop Blvd.
Cheyenne, Wyoming 82006
david.bumann@wgf.state.wy.us

Meetings Northwest, LLC
TEL: 406/273-7224
Toll Free: 1-866-633-8110
admin@conservationengineers.org

Conference Program

Dave Bumann, PE
Wyoming Game & Fish Department
5400 Bishop Blvd.
Cheyenne, Wyoming 82006
david.bumann@wgf.state.wy.us



The 31,900 acre Horicon Marsh was created by glaciers over 12,000 years ago. Prior to the 1800s, the marsh was home to Native Americans and many forms of wildlife. European settlers dramatically altered the marsh in the mid 1800's with two failed experiments. In 1846 a dam flooded the marsh to allow for steamboat navigation. In the early 1900s, the marsh was drained in hopes of creating farmland. The soil proved unsuitable for farming, however, and the land was abandoned as wasteland. In the 1920s, conservationists successfully urged the passing of the federal Horicon Marsh Wildlife Refuge Bill, which restored the water levels to recreate the marshlands and provided for additional land acquisition. Foresight of these early conservationists provided Wisconsin with an internationally renowned wetland. In 1990, the marsh was added to the list of Wetlands of International Importance by the International Union for the Conservation of Nature. Today approximately 400,000 people visit the marsh area annually.

In 1993, the Wisconsin Department of Natural Resources purchased an existing 17,800 gsf building located on State Highway 28 in Dodge County at the southeast corner of the marsh. Originally constructed in the mid-70's as a medical clinic, the "Flyway Building" most recently operated as a DNR Service Center. Constructed into a hillside, the building was one story in height at its front and a full two stories at the rear, facing the marsh. Large windows offer a commanding view of the Marsh and wildlife area below. The site is quite simply one-of-a-kind.



In 1994 the Friends of Horicon Marsh International Education Center was formed. Its membership includes many local businesses, civic and service organizations and Dodge County. This broad based public-private partnership has been a significant driving force behind the education center concept, and its successful fundraising efforts provided almost \$1.4 million

The \$4.8 million transformation has provided:

An upper level, consisting of 9,910 square feet with direct access to parking areas. It provides space for a main visitor lobby, public toilets, a marsh viewing areas, a discovery exhibit area, a gift shop and includes 4800 square feet of office space to accommodate DNR programs and personnel.

A 15,230 square foot lower level providing direct access to the marsh and nearby education areas. It includes two large classroom/laboratories, toilet rooms, a traveling exhibit area, space for future permanent exhibits, a marsh viewing deck and a kitchenette to serve the 1,800 square foot multi-use auditorium with its state of the art audio visual system.

Education Center promotes understanding of natural environment

The Horicon Marsh International Education Center is a public-private effort between the Wisconsin Department of Natural Resources and the Friends of Horicon Marsh International Education Center, Inc. This is a \$4.8 million project with construction having begun in November 2007 and will be completed in early 2009. The Education Center will focus on wetland and wildlife topics to help visitors understand the delicate natural relationships that exist at this 32,000 acre marsh.

The Education Center will be a 25,000 square foot facility located off Highway 28 between the cities of Horicon and Mayville. It will feature an auditorium and high-tech audio/visual center, two classrooms with lab space for hands-on experiences, traveling exhibit area, a research library, gift shop, large public viewing area with a spectacular view of Horicon Marsh, and many other visitor amenities.

This facility will serve both as a destination and gateway for visitors to Horicon Marsh as well as provide for year-round education opportunities. Horicon Marsh is a State Wildlife Area, a National Wildlife Refuge, a Unit of the Ice Age National Scientific Reserve and is recognized as a Globally Important Bird Area. It received the prestigious title of 'A Wetland of International Importance' in 1991. The Education Center will provide a world-class educational facility at one of the most renowned and recognized wetlands in Wisconsin, the United States and the world. The Friends of the Horicon Marsh International Education Center was formed in 1994 and over the past 14 years has worked tirelessly in raising nearly \$3 million towards the buildings' project budget. More than 500,000 people annually visit the marsh to observe wildlife in a natural setting, creating a huge demand for interpretive services. Through the wildlife education program, staff have

provided professional training to 63 delegations of scientists from 39 foreign countries and conduct some 175 to 200 interpretive programs at the marsh each year, reaching nearly 10,000 people. Since 1984 the education program has conducted more than 4,000 programs for over 225,000 people. Yet, this is only a small proportion of the half million annual visitors to the marsh. It is expected that the Education Center will provide something for everyone.

When completed, this center will open to the public with all of its facilities fully developed, except for the exhibit hall. At this time, this 3,500 square foot area will remain as undeveloped space. Future fund raising efforts through the Friends Group will focus on completing this display area, featuring museum-style exhibits. The Education Center will not only be a benefit to the thousands of annual visitors to Horicon Marsh, but will be a great asset to the local area. While the education program currently hosts many school groups, teachers, scouts, and civic and environmental organizations each year, most of these people travel a distance to come here. This facility will also provide endless opportunities for outdoor education and an enjoyment and understanding of our natural resources that will be readily accessible to the local schools and area citizens.

This Education Center will further benefit the area communities in numerous other ways. It is currently estimated that the economic impact to Dodge County from tourism at Horicon Marsh is \$7 million per year. Due to the strong local support which has allowed this project to go forward, there will be a tremendous return to the area as Horicon Marsh visitors seek out this center and spend even more time exploring other local natural resources.

John Hagman
WI Department
of Natural Resources

Conservation engineering is a good fit for this volunteer group

There is an organization you may want to look in to. It is Engineers Without Borders. It is a volunteer organization which helps people here and abroad with projects to improve their lives.

Their website is www.ewb-usa.org. You can join as a professional or other category. You do not need to be an engineer to join. As with Conservation Engineering, other disciplines are needed for successful projects.

Conservation Engineers are uniquely qualified to assist on these project. The experience obtained in completing our normal tasks provide the ability to look at projects in an appropriate and sustainable manner.

I have volunteered as a technical review committee member. I help review projects on a monthly basis. I am also involved with a water / sanitation project in Madagascar. I am also working on starting a project in Uganda which would provide water and sanitation to four schools and a number of villages.

If you would like to help with these projects please let me know. If you prefer you can go to the Engineers Without Borders website and find other project in need of assistance or find which projects your local chapters may be working on.

If you don't have time to volunteer to help with these projects you can always donate to the project of your choice. You can do this on the EWB website.

Dwight Hanson
Nebraska

James (Jim) Schalk Memorial Association of Conservation Engineers Scholarship

Application Requirements

1. The purpose of this program is to promote the Association of Conservation Engineers (ACE) and the continued study and learning required for the conservation, preservation, and restoration of our natural, cultural, and renewable resources in the areas of preservation and recreation. ACE is an international organization of engineers and allied personnel employed by conservation and natural resource agencies and consultants with specialized interests in the areas of fish, wildlife, parks, forests, and related conservation/recreation fields. Additional information about ACE can be found at our web site: www.conservationengineers.org.

2. The selection of scholarship nominees shall be according to the following eligibility guidelines:
 - a. The selection shall be restricted to sophomore, junior, and senior class students enrolled in an accredited course of college study directed toward a degree in engineering, any of the natural or cultural sciences, or agriculture.

 - b. Students shall carry a full program and be enrolled as a full time student.

 - c. The student shall submit a technical paper of 1250 words maximum but not less than 750 words written in essay form. The paper's topic shall relate to the conservation, preservation, and/or restoration of natural, cultural, or renewable resources. The student selected by the selection committee may present their paper orally on the final day of technical paper presentations of that year's annual conference.

 - d. A recommendation letter, on university letterhead, from one of the student's instructors shall accompany the submitted technical paper stating the student's qualifications for this scholarship.

3. The monetary value of this scholarship shall be \$1,000.00 (one thousand dollars) paid directly to the recipient. Presentation of the award shall be at the annual awards banquet. It is the discretion of the recipient on how the award shall be used.

Submittals may be by email to dwight@pitlessunit.com

The instructor should send a separate email for their recommendation using their University email address.

**James (Jim) Schalk Memorial
Association of Conservation Engineers Scholarship**

2009 Application Form

Name: _____ Date: _____

Address: _____

Phone Number: _____

E-mail Address: _____

Major: _____

Class (circle one): Sophomore / Junior / Senior Anticipated Graduation Date: _____

Name of School: _____

Address of School: _____

Send completed Application Form, instructor's letter of recommendation, and written essay to:

Dwight Hanson, P.E.

H₂Optimal, Inc.

PO Box 105

Ithaca, NE 68033

e-mail: Dwight@pitlessunit.com

Phone: (402) 623-4247

Applications must be received no later than April 1, 2009.

Winner will be notified by May 15, 2009.

Take the challenge!

Terry Boyd offers standing invitation to encourage new members

Greetings from Alabama, hope all of you are survived the winter. We need to start making plans to attend the 2009 Conference in Cody, Wyoming. I know David and Kathy are working hard to make this a successful event, but without our participation it will not be successful. I know everyone has a project that they could present a paper on so let commit early to make it easier on them.

As I mentioned in last news letter our new pier was about 95% complete when Hurricanes Gustav and Ike hit town, we lost over 40 piling due to damages caused by these storms. We just got the construction back to where we were in August prior to the storms. At the current rate we hope to be open in May. We just awarded demolition of the old pier first of March; therefore, it should be done and providing fish

habitat by the time the new pier is open. And yes we are still doing FEMA paper work, it will last forever.

I am still offering my membership challenge fund, so please get someone to join because I would rather pay for 8 new members than me spend it on shells or bait. I want to encourage everyone to get one new member this year.

Lynda does a great job of putting together the newsletter, but without input from the membership, she has nothing put in it. So again, I encourage every ACE member to submit at least send one paragraph to the newsletter letting everyone know what is going in your state or at your facilities. Please send a brief description and pictures of your projects. We can all learn from others successes and failures.

I am still co-chair on a SOBA committee that is producing a DVD on boat ramp, docks and marina construction, if any of you have any video footage or pictures of this type construction, please send to me. We extended our deadline for the footage or pictures until May 15, 2009.

Look forward to seeing you in Cody, Wyoming in August.

Terry N. Boyd, PE, PLS
AL Department of Conservation and Natural Resources

PS: I am planning on getting up a bottom fishing trip this summer in the Gulf from Orange Beach if you are interested, please call me at: (334)799-9149 cell or (334) 242-3836 office. I am looking at sometime in June after snapper season opens.

Information to help promote membership in ACE

The objectives of ACE are:

- To encourage and broaden the educational, social and economic interests of engineering practices.
- To promote the recognition of the importance of sound engineering practices in fish, wildlife and recreation development.
- To enable each member to utilize the experiences of other members.
- To generally take all such proper action that may be necessary to further the cause of fish, wildlife and recreational developments.

Applications are available online at: www.conservationengineers.org or by contacting the ACE Secretary: Kathy Dillmon
Wyoming Game & Fish Department
5400 Bishop Blvd.
Cheyenne, WY 82006
e-mail: kathy.dillmon@wgf.state.wy.us

We have three grades of membership by application:

Active Member - must be engineers, allied professionals or technicians engaged in the endeavors of conservation engineering.

Associate Member - open to persons engaged in similar pursuits as those employed by conservation-recreation agencies, and those who may have special interests in the conservation field.

Student Member - for a person enrolled as a full time student at an accredited college or university in a program leading to a degree in engineering or engineering technology. Persons enrolled in programs leading to other degrees may also be eligible if documentation is provided that they intend to work in the field of Conservation Engineering. Student members shall have the right to participate in all activities of the Association except the right to vote and hold office.

Two other memberships conferred by action of the active members:

Honorary Memberships are granted to individuals who have performed a special service to the Association or for an outstanding endeavor.

Life memberships may be earned by active members under certain qualifying conditions such as length of serve and retirement.

ACE has no initiation fee, but all members of the Association, except honorary and life members, pay annual dues of \$25.00 for the calendar year or any part thereof. Initial dues should accompany an application for membership with checks or money orders made payable to Association of Conservation Engineers.

Thank you to volunteers

Dedication and hard work keep ACE going

I hope everyone had a great holiday season. If you are like me it is time to gear up for a busy construction season.

As president of this fine organization you begin to realize the many hours of hard work and dedication that is put in by our faithful volunteers. I encourage you to visit our great new website. That effort was spearheaded by our dedicated Secretary Kathy Dillmon from Wyoming. You can get a lot of information about our upcoming conference on the website and Kathy and Dave Baumann have worked hard on the conference agenda. There are still opportunities to submit technical papers or register as an exhibitor or sponsor.

We would not be reading this newsletter if it were not for the efforts

President's Message

of Lynda Cliburn and the support she receives from her team at HDR|FishPro.

I encourage you to recruit new members to attend our Annual Conference. What could be a better way to end the summer than to spend a few days in beautiful Cody Wyoming!

Have a great spring and I hope to see you in August.

David Freedman, PE
GA Department of Natural Resources



inside...

SPECIAL PULL OUT SECTION—all
about this year's Conference
Using carp to cut the payroll
Scholarship information and more!

HDR Engineering Inc.
5201 South Sixth Street Road
Springfield, Illinois 62703-5143
217.585.8300 or 217.585.8333