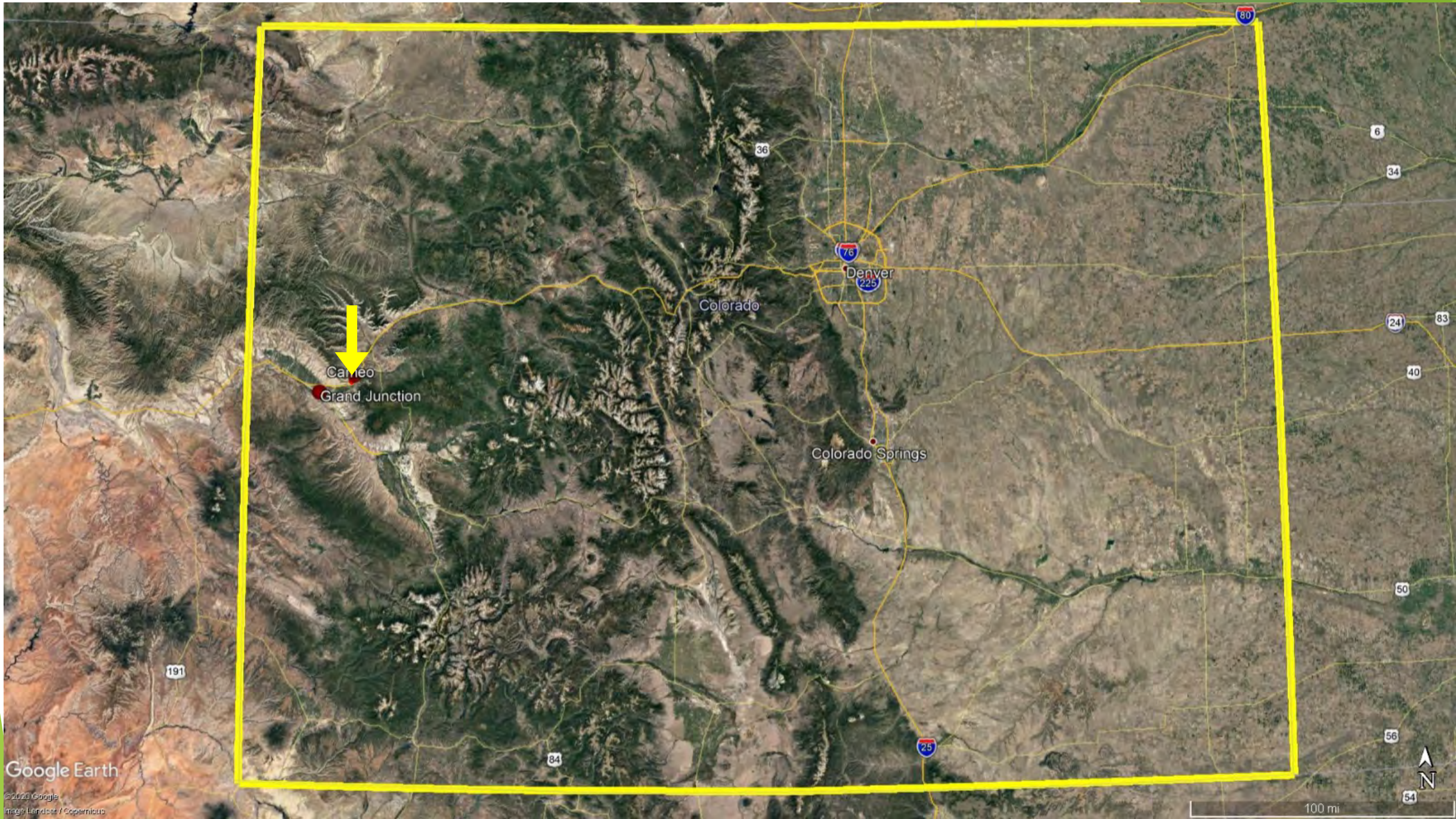


Cameo Shooting and Education Complex - Sporting Clays

Presenter Gene Potter
Colorado Parks and Wildlife



<http://cameosec.org/>



Google Earth

© 2020 Google
Image Landsat / Copernicus

100 mi





Historic Mining/Xcel Coal Fired Powerplant



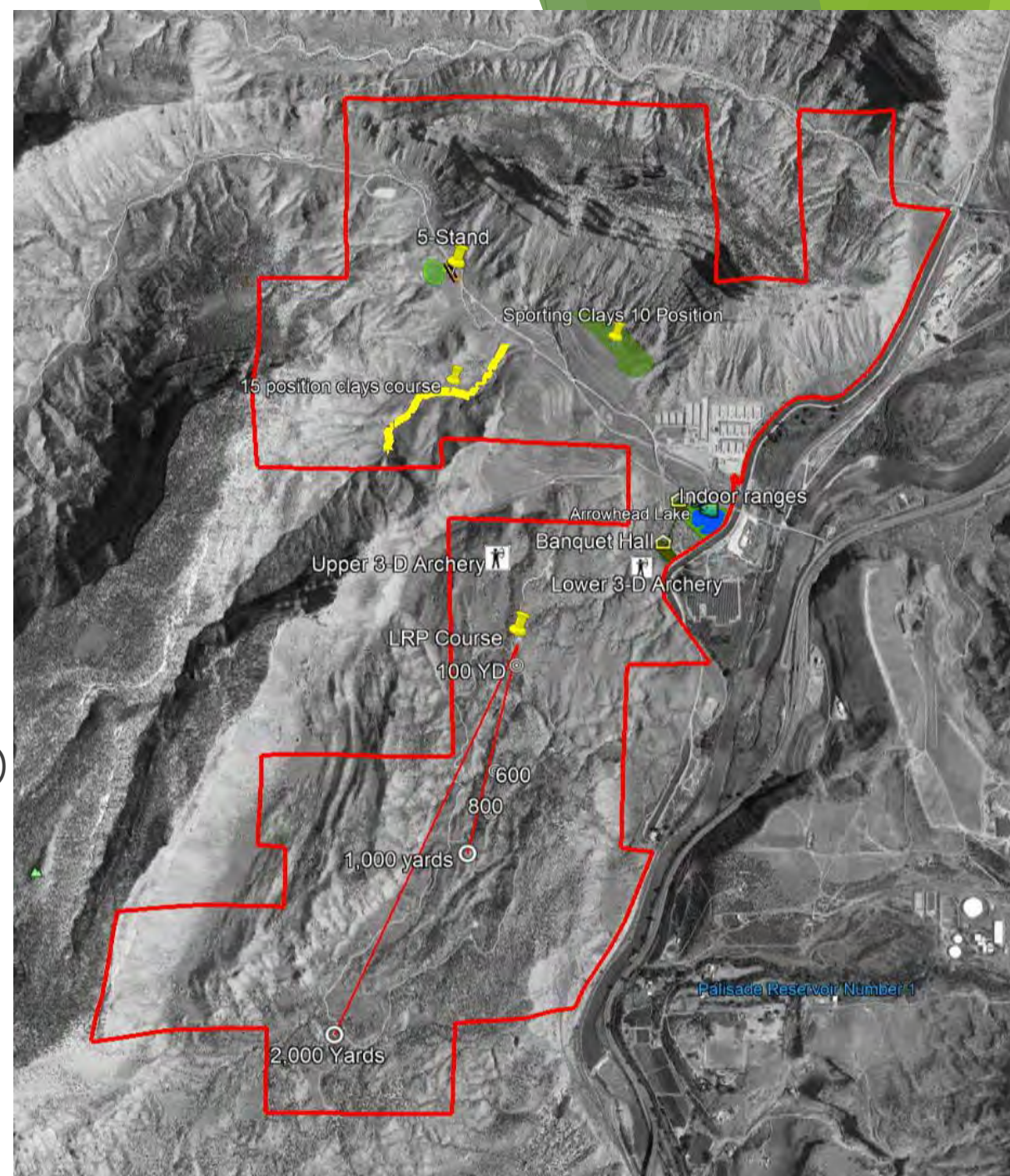
1993



2006

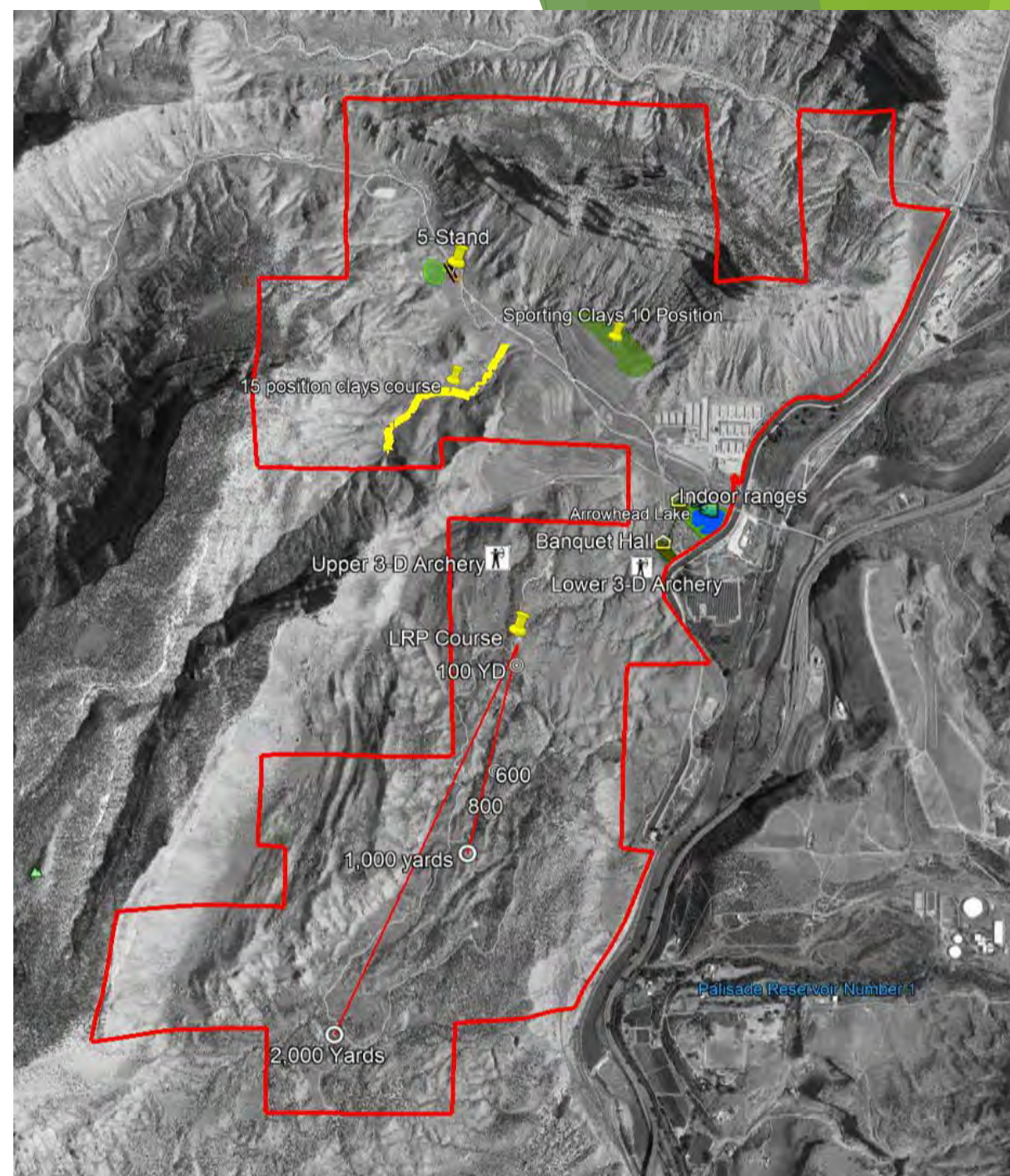
Current Facilities

- ▶ 1,747 Acres (Acquired 2017)
- ▶ 7 Public Bays - 40-200 yd (2018)
- ▶ 13 Club Bays (2018)
- ▶ Static Archery Range (2018)
- ▶ 4 3-D Archery Ranges (2019)
 - ▶ Youth/Limited Mobility to 2-Mile Extreme
- ▶ Long Range Precision Rifle Course - 100-2000 yds (2019)
- ▶ 5-Stand Shotgun Facility (2020)
- ▶ 2 Sporting Clay Courses (2020)
- ▶ 8,400 sqft Service center/indoor storage (Nov. 2020)



Future Facilities

- ▶ Visitor's Center (Design 2020 - Construction 2024)
 - ▶ 2 - 10 lane indoor range (25 yds)
 - ▶ Classrooms
 - ▶ Vendor spaces
- ▶ Banquet hall
- ▶ Outdoor education complex including fishing lake
- ▶ 8 Additional club/event bays
 - ▶ Will allow CPW to Host National Events
 - ▶ IDPA - International Defensive Pistol Association



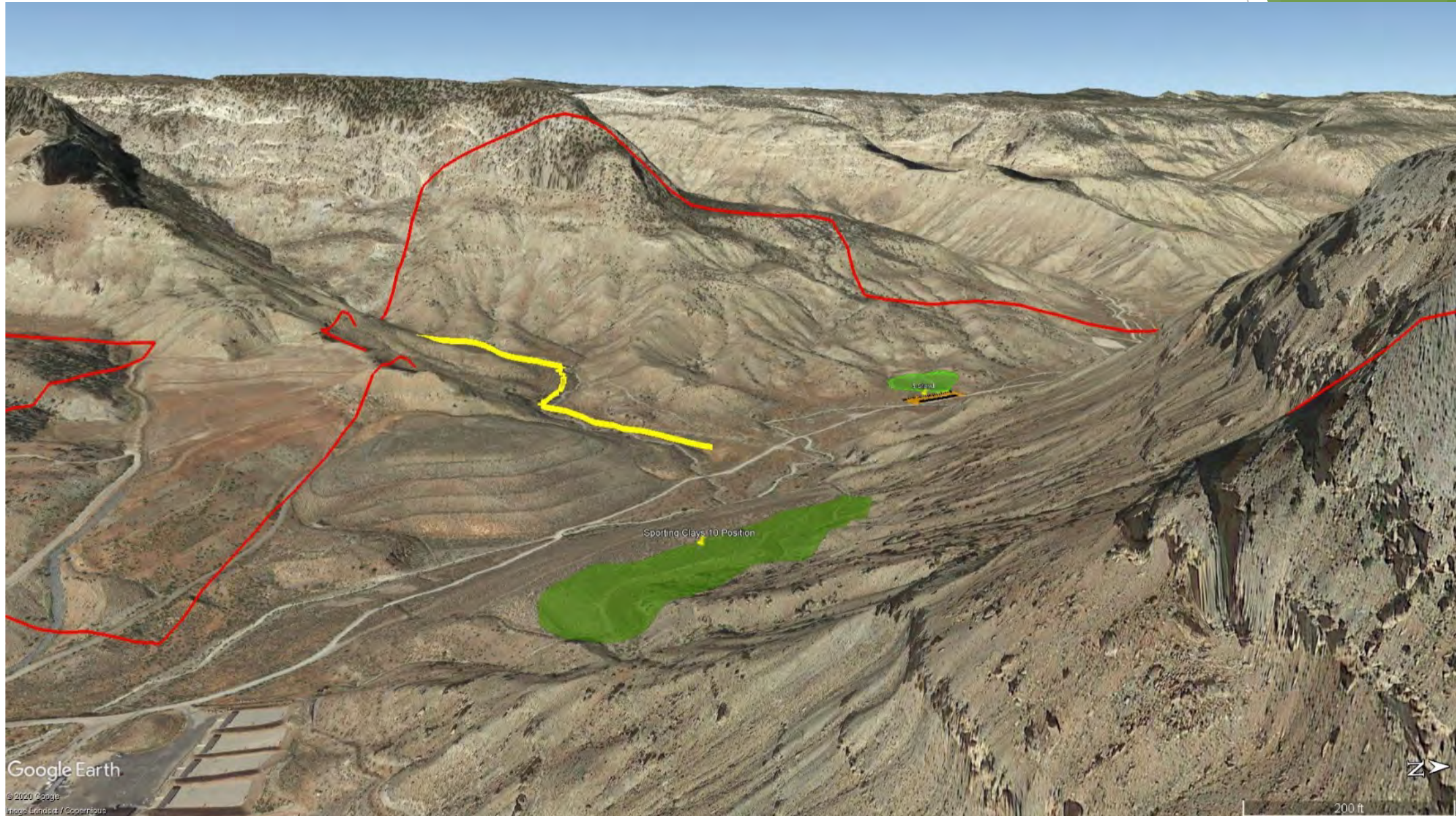
Question?

- ▶ Have you ever done sporting clays?
 - ▶ Yes/No?
 - ▶ If so, what state?

Sporting Clays and 5-Stand



Sporting Clays and 5-Stand



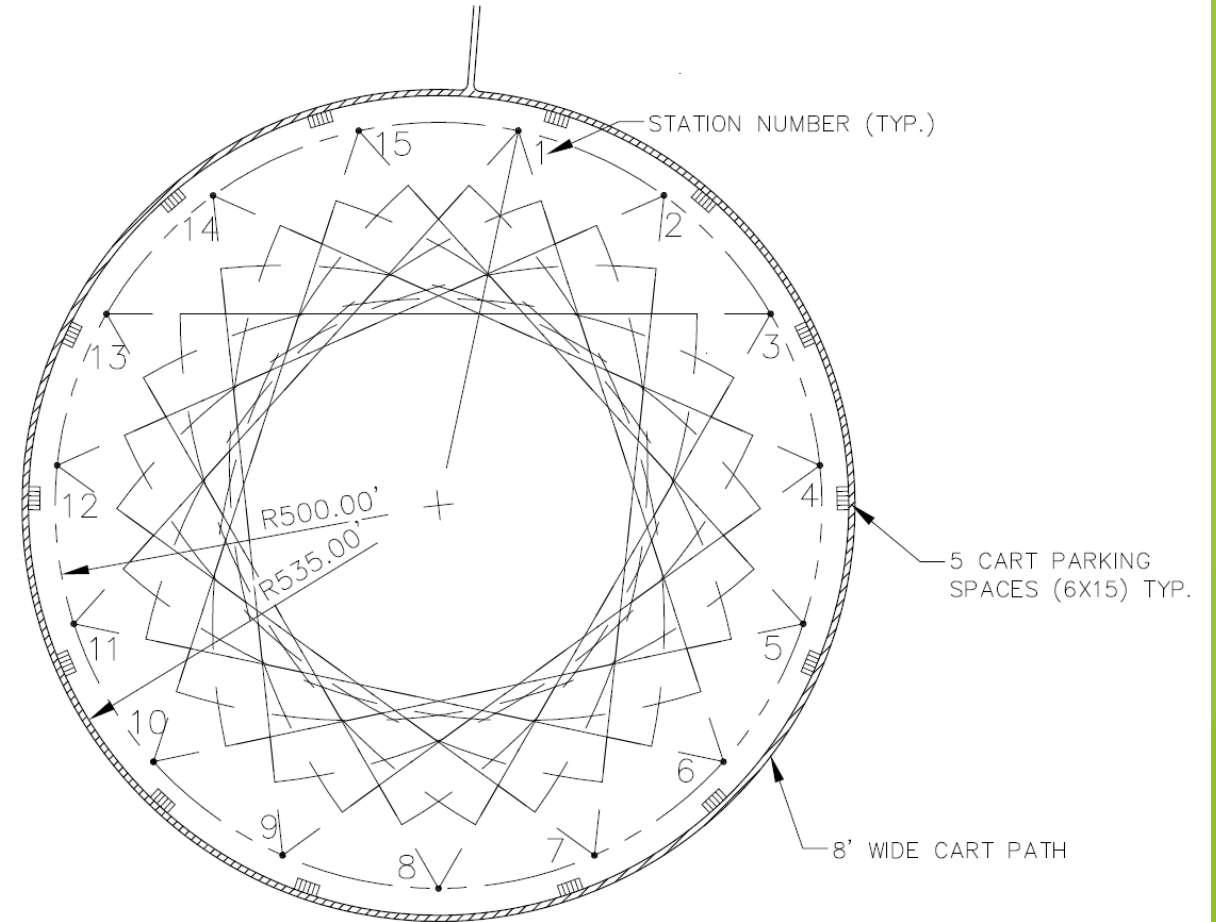
Wheel Style

► Benefits

- Easier to monitor
- Lead cleanup and remediation is consolidated
- Simple layout and design
- Impacts least amount of land area
- Cart Path is one way (less user conflict)

► Disadvantages

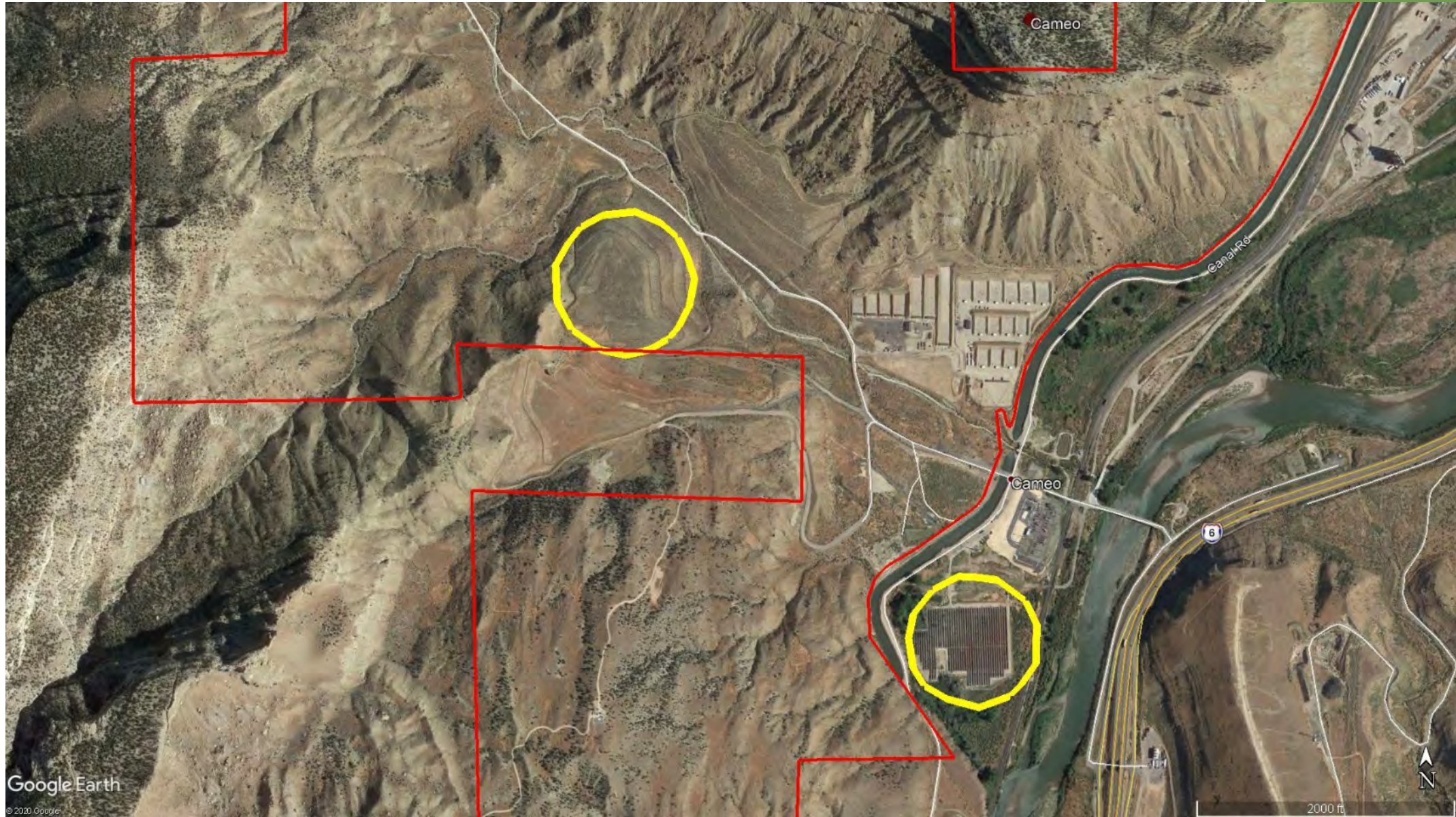
- Requires a large flat section of land
- Limited unique shooting opportunities



13 TO 15 STATION SPORTING CLAYS COURSE FIELD

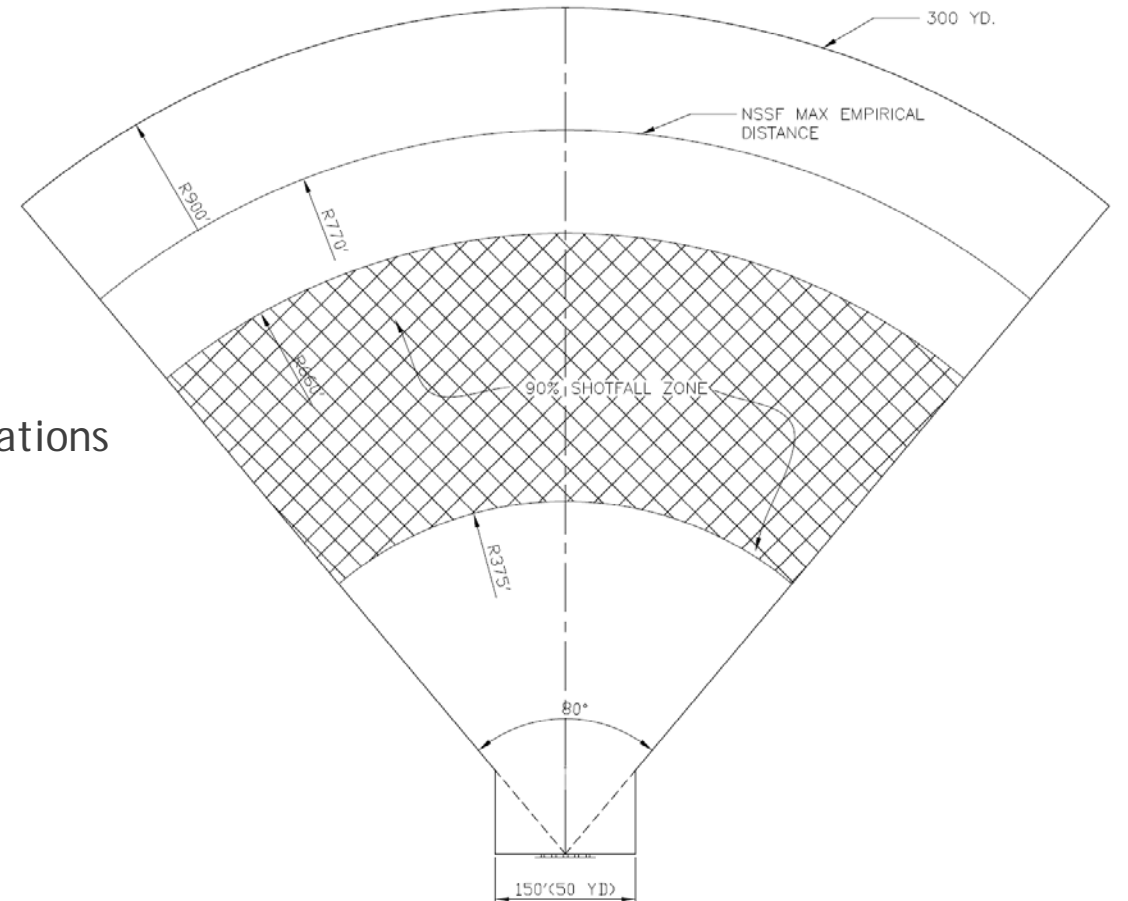
SCALE: 1" = 200'

Possible Locations



Linear Style

- ▶ Benefits
 - ▶ More flexibility depending on topography
 - ▶ Allow for more unique shooting opportunities
 - ▶ Reduces concern of shooting toward other shooting stations
- ▶ Disadvantages
 - ▶ Lead clean up and remediation is more spread-out
 - ▶ Requires longer trails to connect shooting stations
 - ▶ Overall land area impacted is greater
 - ▶ Ability to monitor can be more difficult
 - ▶ Requires more design effort
 - ▶ Cart path is two way, requires pull-outs of wider section



SKEET FIELD SHOTFALL ZONE PLAN

SCALE: 1/128"=1'



General Considerations

- ▶ Topography
- ▶ Soil pH Levels
- ▶ Waterways and Wetlands
- ▶ Threatened and Endangered Species
 - ▶ Hookless Cactus
- ▶ Public Use/Club Use/Competitions
- ▶ Transportation (type, maintenance, storage, etc.)
- ▶ Customer Service (payment, ammunition, etc.)
- ▶ Restroom facilities (Vault Toilets, Port-o-lets)
- ▶ Parking
- ▶ Maintenance (traps, trails, pay stations, etc.)
- ▶ Access Control



Shooting Positions

- ▶ Physical Shooting Station
- ▶ Pay Stations
- ▶ Shotgun Holders
- ▶ Shell Fall Zone
- ▶ Shell Disposal
- ▶ Shotfall Zones
- ▶ Solar Effects (Where will the sun be AM/PM)
- ▶ Topography
- ▶ Drainage/Wetlands
- ▶ Cart/UTV Parking Areas
 - ▶ Pull thru trailer parking for customer provided carts
- ▶ Thrower Selection and Placement (maintenance, protection)
- ▶ Station Diagrams



Project Costs

- ▶ Course Design/Layout - \$80,000
- ▶ Traps & Station Controls - \$264,000
 - ▶ 15 Station Course - 2 traps per station
 - ▶ 8 Station Course - 3 traps per station
 - ▶ 5 Stand - 9 traps
 - ▶ 3 Spare traps
 - ▶ Provided by Howell Shooting Supplies
 - ▶ Trap Manufacturer Atlas (3 styles)
- ▶ (4) Single Vault Toilets - \$240,000
- ▶ Parking Lots and Trails - \$250,000
- ▶ Fencing & Gates - \$56,000
- ▶ Service Center/UTV Storage Building - \$1,010,000
- ▶ UTV/Side by Side (38) - \$532,000
- ▶ Marketing/Promotion - \$\$\$



Fee Structure

- ▶ Individual Day Use Pass (Public Bays/Archery)
 - ▶ Adult/Child: \$12/\$3
- ▶ Individual Annual Pass (Public Bays/Archery)
 - ▶ Adult/Child: \$150/\$50
- ▶ Corporate Pass (10 passes per day) - \$3,000
- ▶ Long Range Precision Rifle (Single 2-hour Bench)
 - ▶ Adult/Child: \$12/\$3
- ▶ **Sporting Clays:**
 - ▶ Non-Annual Pass Holder: \$0.40/Clay + Tax
 - ▶ Annual Pass Holder: \$0.30/Clay + Tax
- ▶ UTV Rentals - \$20/day
- ▶ Picnic Pavilion Rentals - \$120/Day

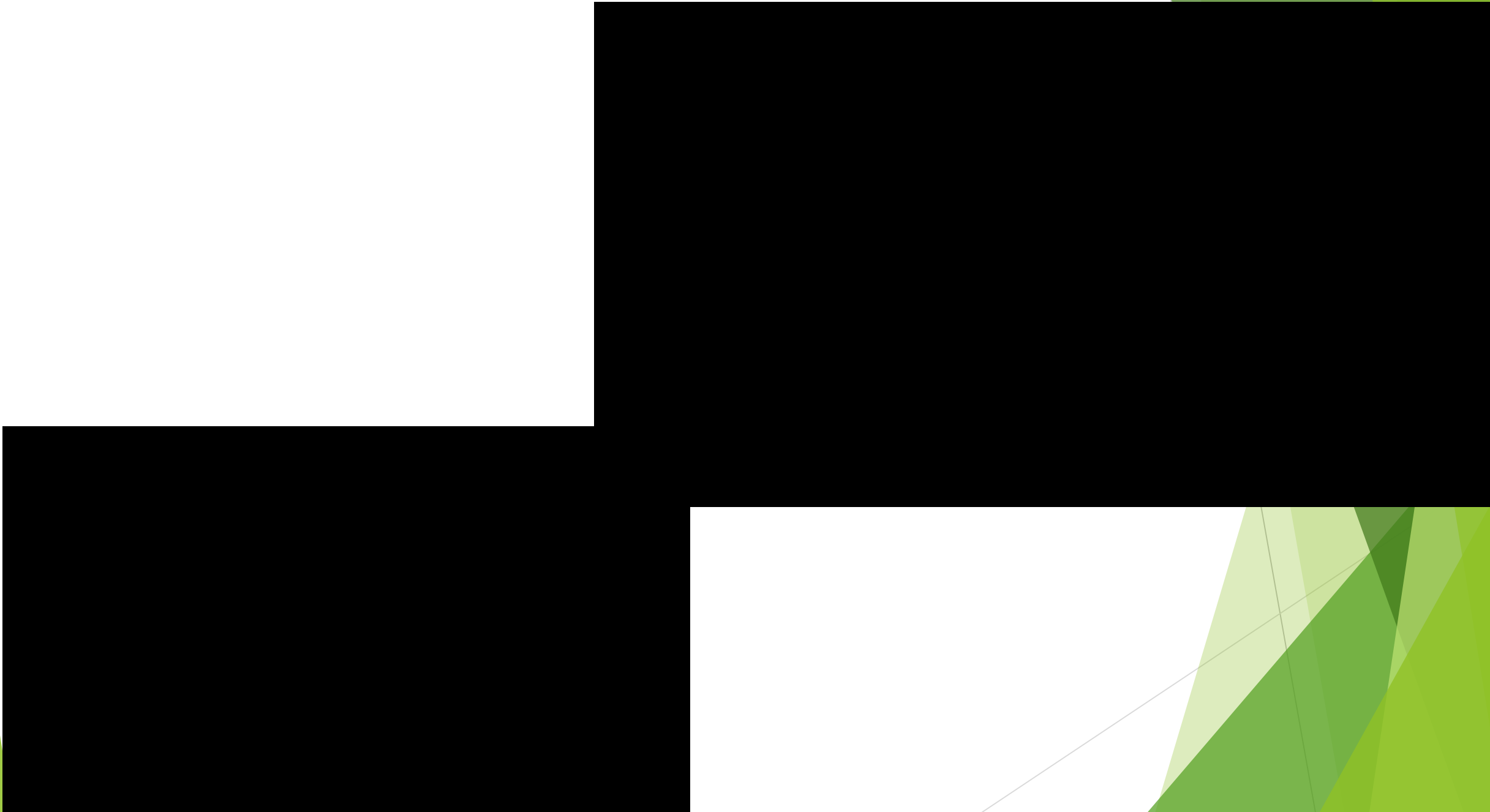
Videos and Articles

▶ Videos:

- ▶ Cameo Marketing Video - https://www.youtube.com/watch?v=aqbb48ZJoeA&feature=emb_logo
- ▶ Shooting USA - <https://www.youtube.com/watch?v=FFxhB2hxpP0>
- ▶ News 5 - <https://www.youtube.com/watch?v=NCbNkeEp5Hw>
- ▶ First Shot Ceremony - https://www.youtube.com/watch?v=NFKM7nLE8-A&feature=emb_logo

▶ Articles:

- ▶ Colorado Outdoors - <https://coloradooutdoorsmag.com/2020/07/13/csec-sporting-clays/>
- ▶ Grand Junction Sentinel - https://www.gjsentinel.com/lifestyle/taking-aim-day-at-cameo-shooting-and-education-complex-right-on-target/article_a5b3ca36-f848-11ea-8078-17b756d05d7b.html
- ▶ Westword - <https://www.westword.com/news/visit-colorado-shooting-range-of-the-future-11394612>
- ▶ Colorado Hunter - <https://www.cohunter.com/news/new-shooting-range-sighted-in-for-cameoby-dale-shrull-it-wont-be-long-before-the-western-slope-has-a-fabulous-new-shooting-range-back-in-may-gov-john-hickenlooper-visited-the-area-where-th/>



Questions?

Walt Proulx - CSEC Manager

