



TIMBER STRINGER

- **Spans 10' – 80'**
- All recreation loadings
- Single or multiple spans
- Pre-framed
- Kits for remote assembly

PLANK DECK



PANEL DECK





Railing Alternatives

- Log
- Picket
- Metal inserts
- Composite lumber
- Naturally durable species



TIMBER PANEL-LAM



Michelson Trail, Black Hills, South Dakota

TIMBER PANEL-LAM



TIMBER PANEL-LAM



ATV Trail - Chippewa County, WI



TIMBER PANEL-LAM

- Spans 10' – 40'
- Heavy vehicle loading
- Quick installation
- Asphalt surface optional



Modest Equipment



Owner Installed



Wheeler

Winter Construction – Frozen Ground



Wheeler

Curb Only – Close to the Ground



Shop-fabricated Panel Superstructure



Wheeler

Post & Sill Shallow Foundation



Post & Sill Abutment Kit



Curb Only – No Approach Rail

Angry Bear Boardwalk

Wheeler

Timber Stringer Kit



Wheeler

Timber Approach Rail

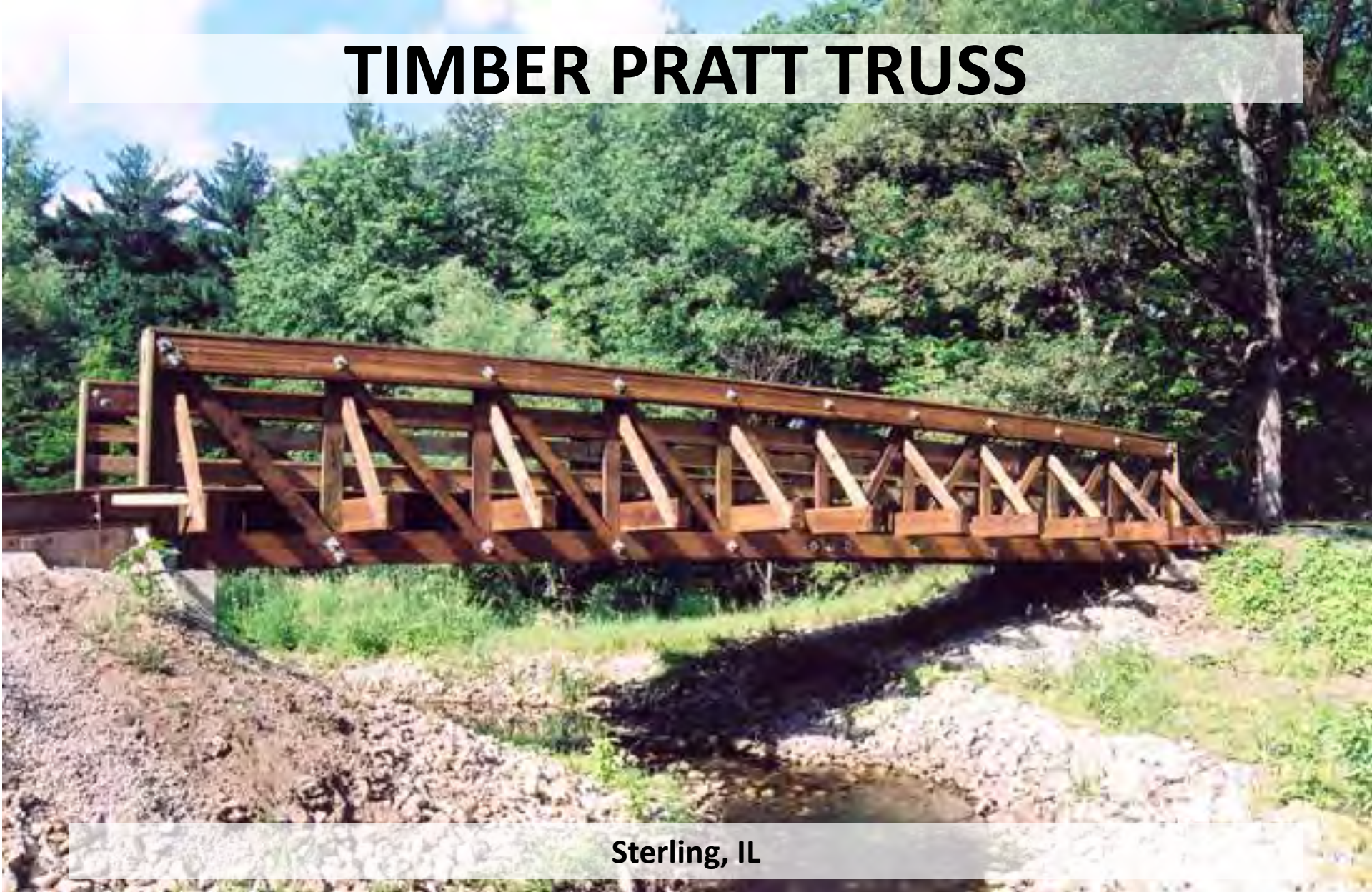


TIMBER PRATT TRUSS



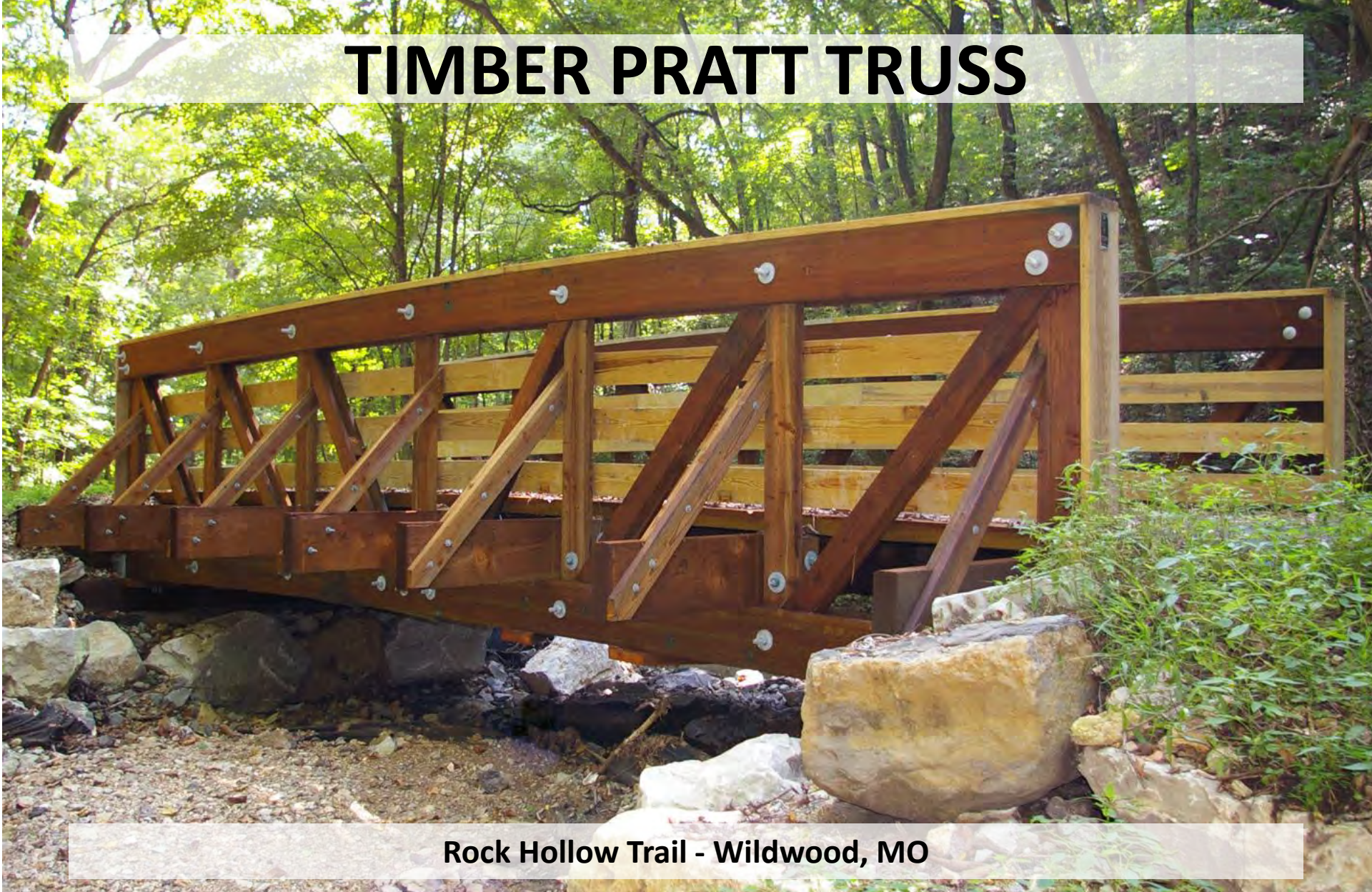
Custer State Park, Black Hills, SD

TIMBER PRATT TRUSS



Sterling, IL

TIMBER PRATT TRUSS



Rock Hollow Trail - Wildwood, MO



TIMBER PRATT TRUSS

- **Spans 30' – 60'**
- Spatial truss
- Shop manufactured
- 10 kip max vehicle

TIMBER TRUSSED ARCH

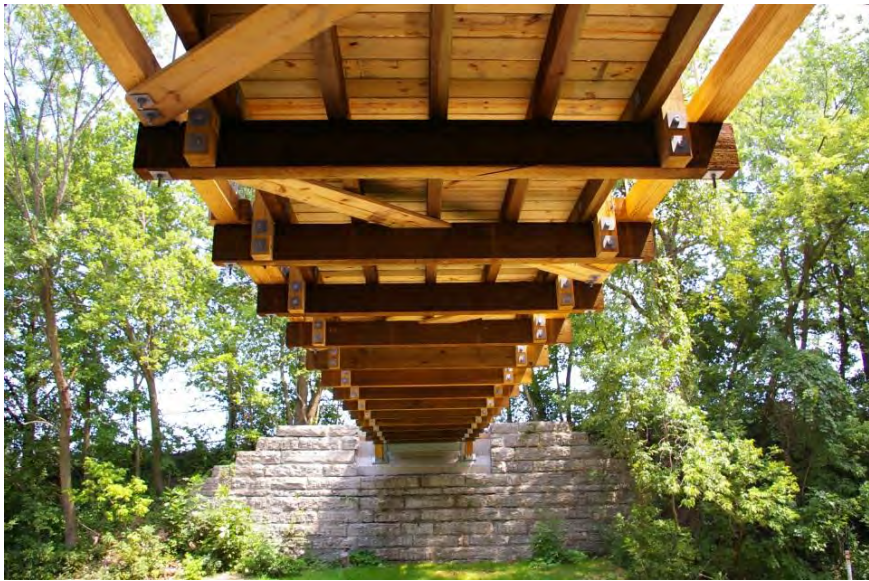
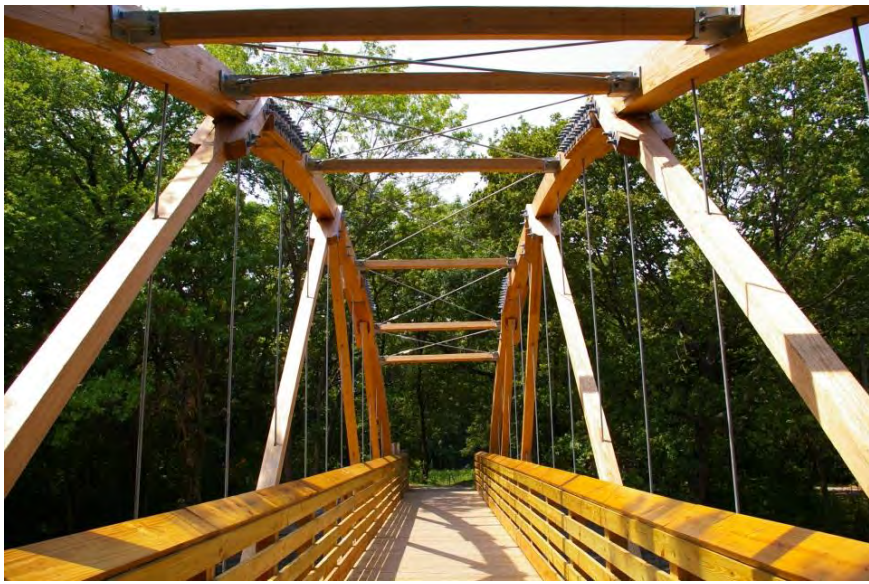


Old Fort King Trail, Tampa, FL

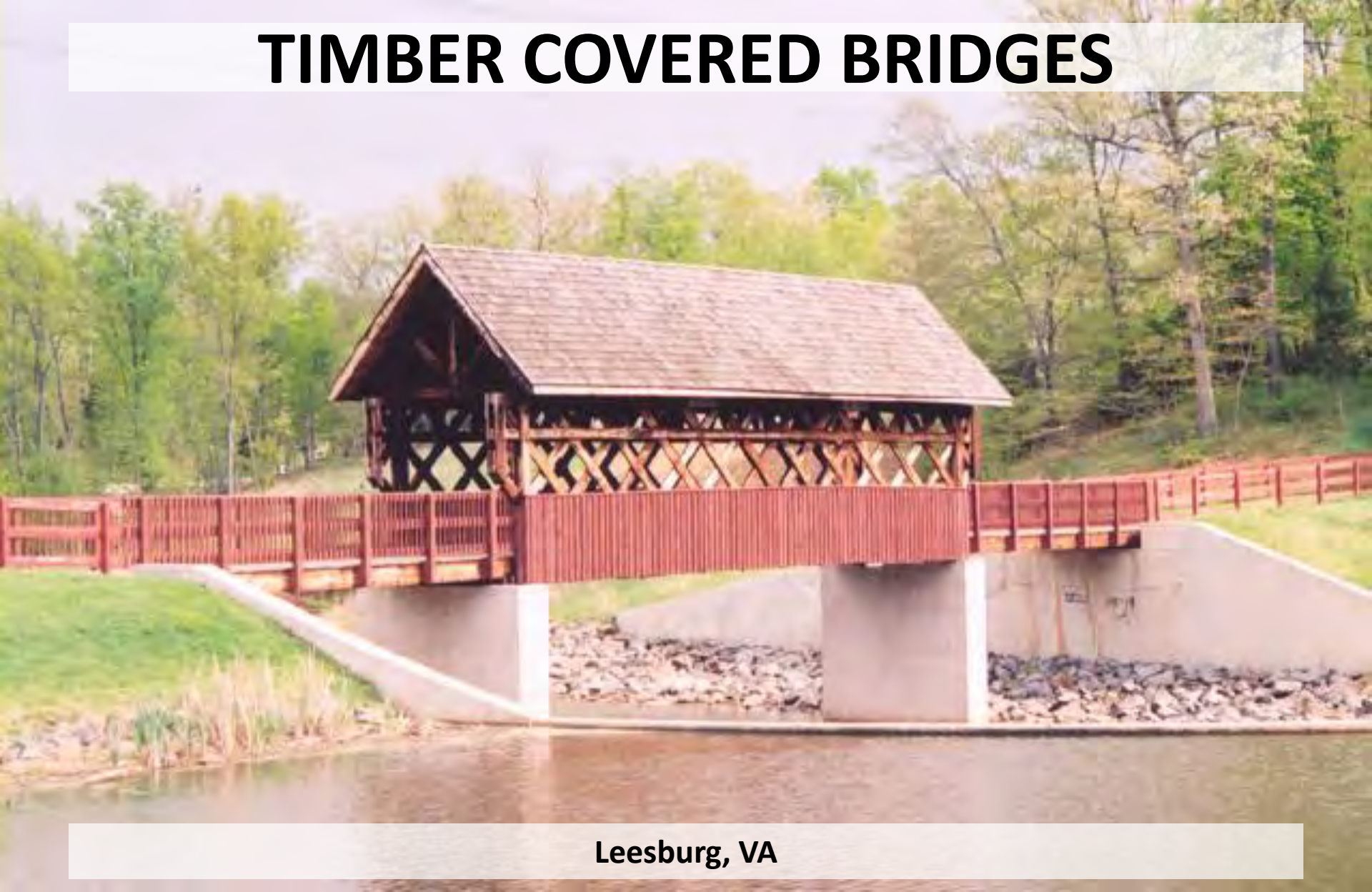


TIMBER TRUSSED ARCH

- Long spans
- Landmark appearance
- Timber / Steel connectors
- Typical recreation loadings



TIMBER COVERED BRIDGES



Leesburg, VA



TIMBER COVERED BRIDGE

- Landmark centerpiece
- Provide shelter
- Handle recreation loadings
- Lattice truss
- Post and beam



The Territory, Credit River, MN

PLATFORMS



Bridal Veil Falls, Black Hills, SD

PLATFORMS



Waterfall Park, Independence, MO



PLATFORMS

- Kits for remote assembly
- Multiple railing options
- Cantilever designs

RAILROAD RETRO-FIT



Sakatah Singing Trail, Waterville, MN



RAILROAD RETRO-FIT

- Timber panel-lam deck
- Attach to timber or steel superstructure
- All work from top
- Railing attached to panels



RAILROAD RETRO-FIT

- Asphalt or timber wear surface

RAILROAD RETRO-FIT



Kickapoo Trail, Danville, IL



Van Buren County, MI



Hamilton County, IN



Town of Franklin, WI



Watsonwan County, MN



Dorchester County, MD



Wayne County, NY



Teton County, WY



Pre-manufactured Kits



- Shop Fabricated
- Shipped as Components
- Complete Material Package
- No Formwork

Spike-laminated Panels



Splice Block



Lifting Eyes Included

Wheeler

Deck-Down Construction



Winter Construction





Crash-Tested Railing

Wheeler

GRS-IBS Abutments



Town of Weare, NH

Wheeler

Glulam Stringers – Wood Deck & Railing



Town of Weare, NH

Wheeler

Steel Stringers – Wood Deck & Railing



Carlton County, MN

Wheeler